

The Coming Population Squeeze

Aging, Slowing Growth, and The Workforce

Ness Sandoval

Professor of Demography and Sociology

Saint Louis University

May 15, 2026



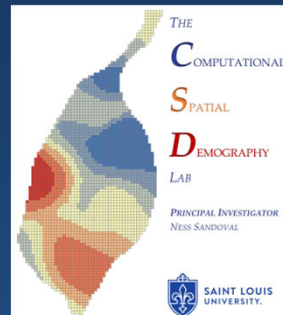
SAINT LOUIS
UNIVERSITY™

— EST. 1818 —

DEMOGRAPHY 4 DEMOCRACY

EMPOWERING TOMORROW'S DREAMERS WITH

KNOWLEDGE TODAY



SAINT LOUIS
UNIVERSITY



Five Demographic Hurdles to Population Growth

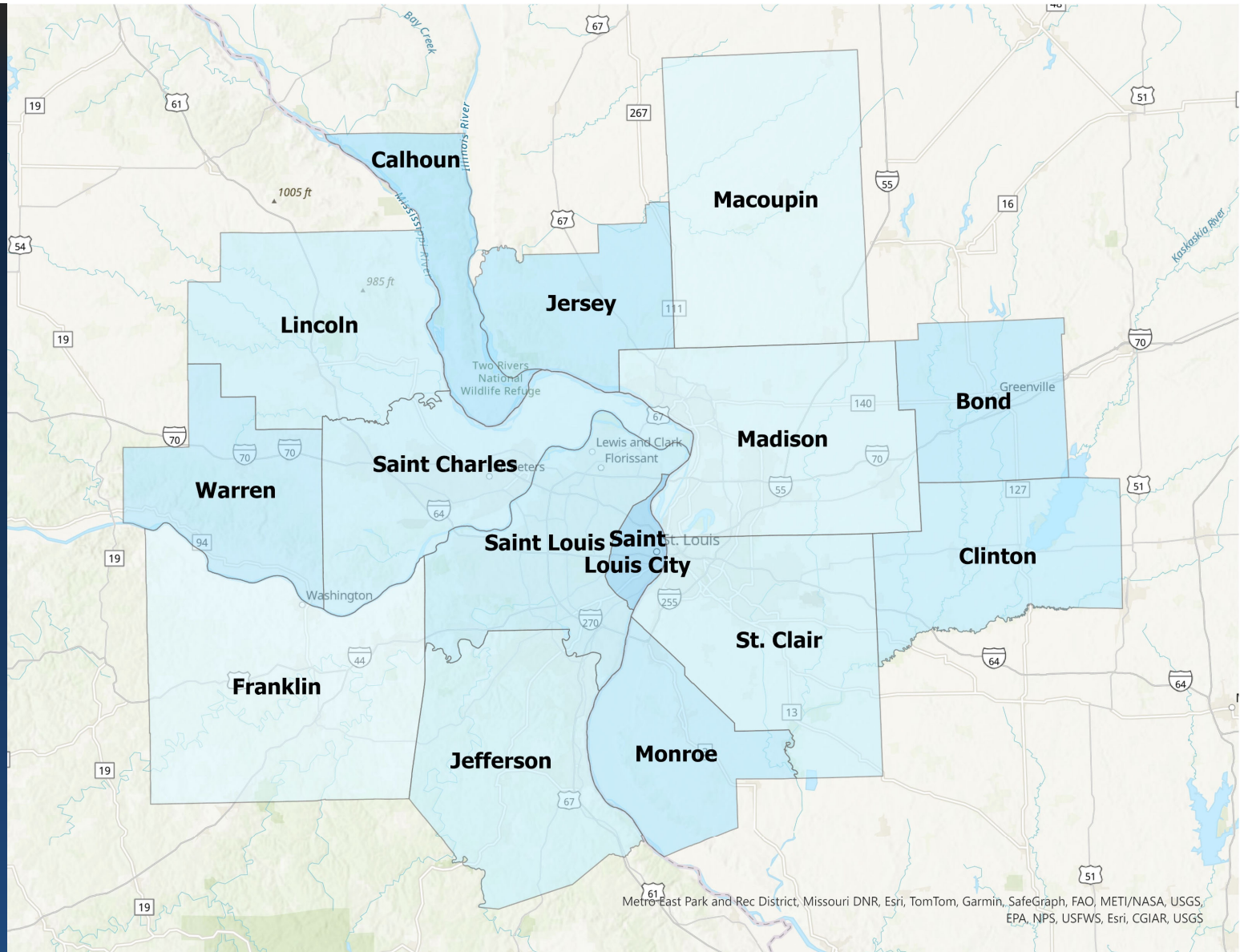
- 1. Natural population decline**
- 2. Fewer children**
- 3. Resident out-migration**
- 4. Lagging housing development**
- 5. Immigrants are offsetting key demographic losses**

Source of the Image:
St. Louis Post Dispatch



The fundamental principle of Demography is that demographic transitions are an inevitable aspect of change, persisting irrespective of whether individuals recognize, acknowledge, or accept the underlying demographic realities and trends.

15 County Metropolitan Statistical Area

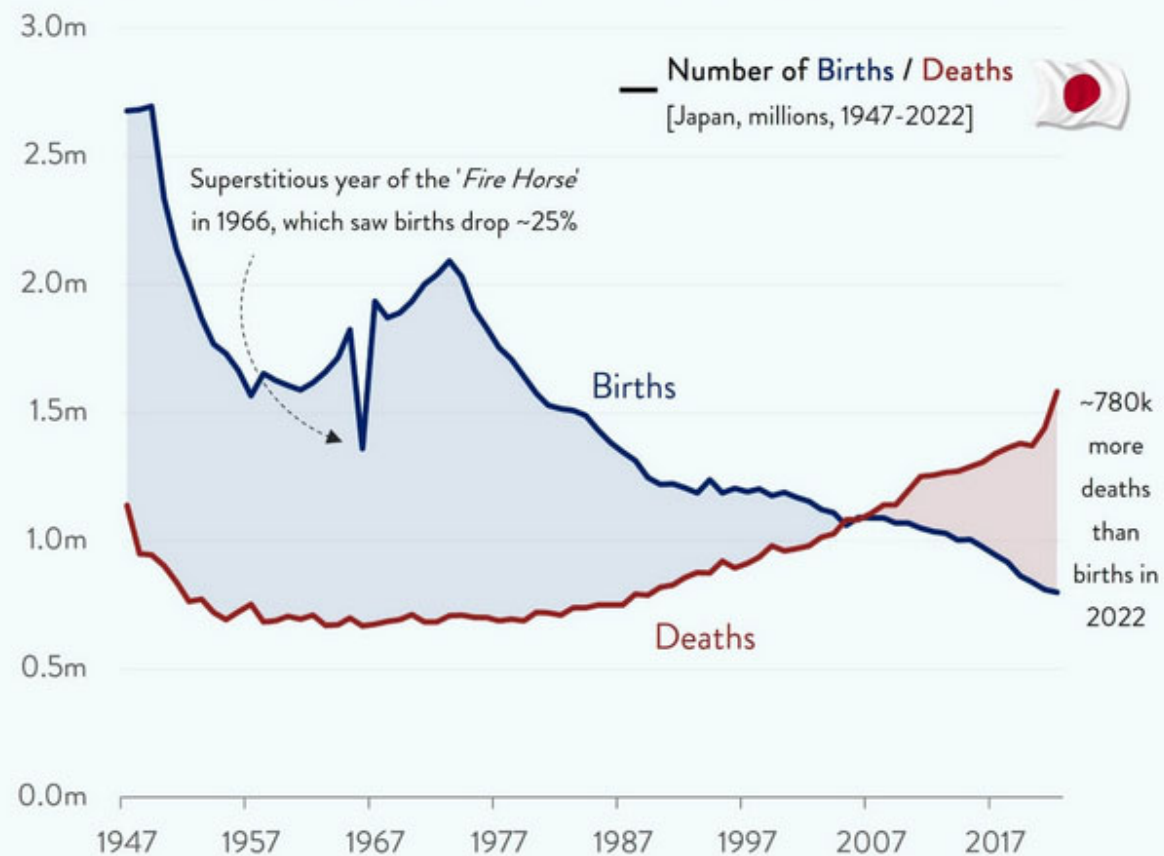


1. MACRO TRENDS

A. Births and Deaths

The Birth and Death Trends in the U.S. are Expected

Japan's Population Problem Grows, As Its Birth Rate Continues To Slide



Source: Ministry of Health, Labour and Welfare of Japan

chart

U.S. Fertility Rates Drop to Another Record Low

The fertility rate has been falling since 2007, in large part because of a plunge among teenagers.

▶ Listen · 3:19 min

📄 Share full article



💬 608



The fertility rate has been falling since 2007. Markus Scholz/picture alliance, via Getty Images



By **Sabrina Tavernise**

April 9, 2026

<https://www.nytimes.com/2026/04/09/us/fertility-rates-decline.html>



ECONOMY

Nobody's Buying Homes, Nobody's Switching Jobs—and America's Mobility Is Stalling

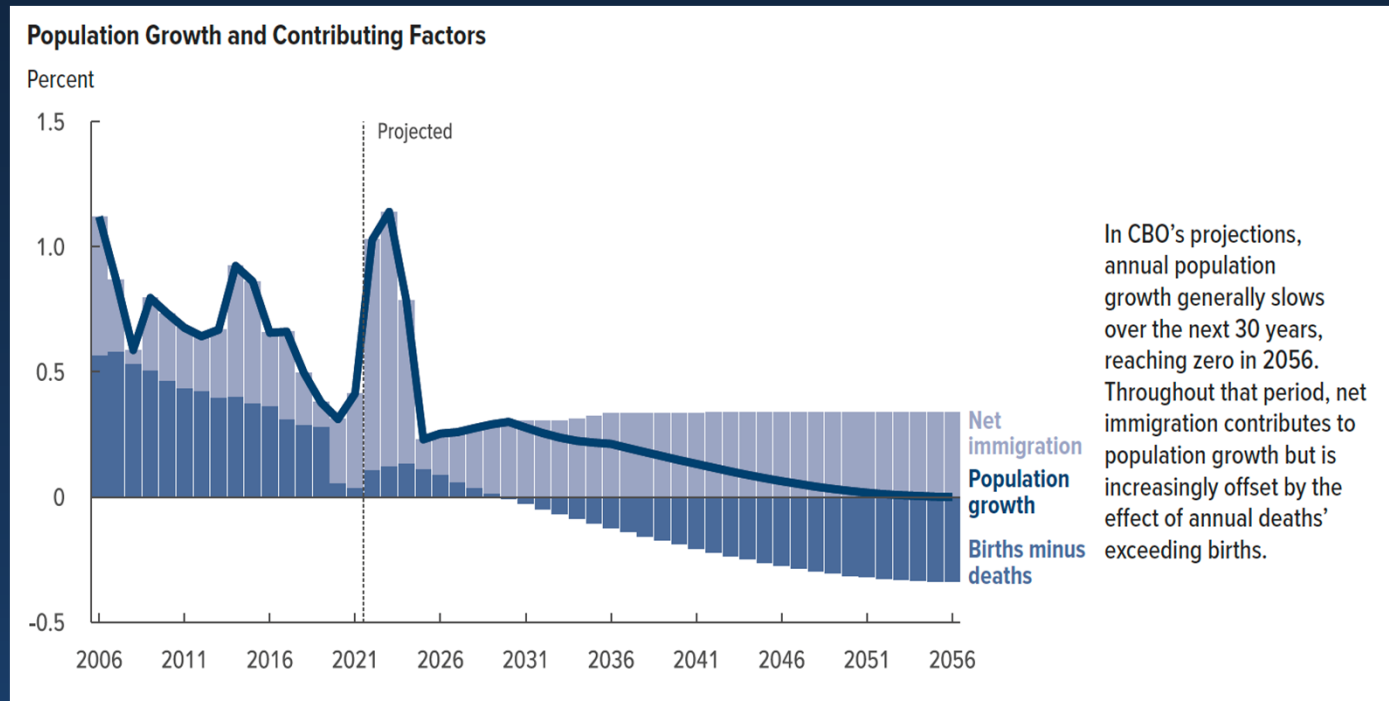
The paralysis has left many people in houses that are too small, in jobs they don't love or shackled with 'golden handcuffs.' For everyone, there are economic consequences.

  Save  Aa  2620 |  Listen (11 min) 

By [Konrad Putzier](#)  and [Rachel Louise Ensign](#) 

Aug. 14, 2025 9:00 pm ET

**“Starting in 2030,
annual deaths exceed
annual births, and net
immigration accounts
for all population
growth”**



U.S. and World Population Clock



The United States



The World

Jan 07, 2026 17:28 UTC (+6)

[Learn More](#) | [Download and Share](#)



U.S. Population

343,075,971



World Population

8,164,227,341

Components of Population Change

17:26:39 UTC

One birth every 9 seconds



One death every 9 seconds



One international migrant (net) every 23 seconds



Net gain of one person every 22 seconds



TOP 10 MOST POPULOUS COUNTRIES (July 1, 2025)

1. India	1,419,316,933	6. Nigeria	242,794,751
2. China	1,407,181,209	7. Brazil	221,359,387
3. United States	342,034,432	8. Bangladesh	170,183,916
4. Indonesia	283,587,097	9. Russia	140,134,279
5. Pakistan	257,047,044	10. Mexico	131,741,347



Select a Date

The United States population on **January 6, 2026** was: **343,069,786**

[Learn More](#) | [Download and Share](#)

Select a Date

Demographic Winter: A State Profile

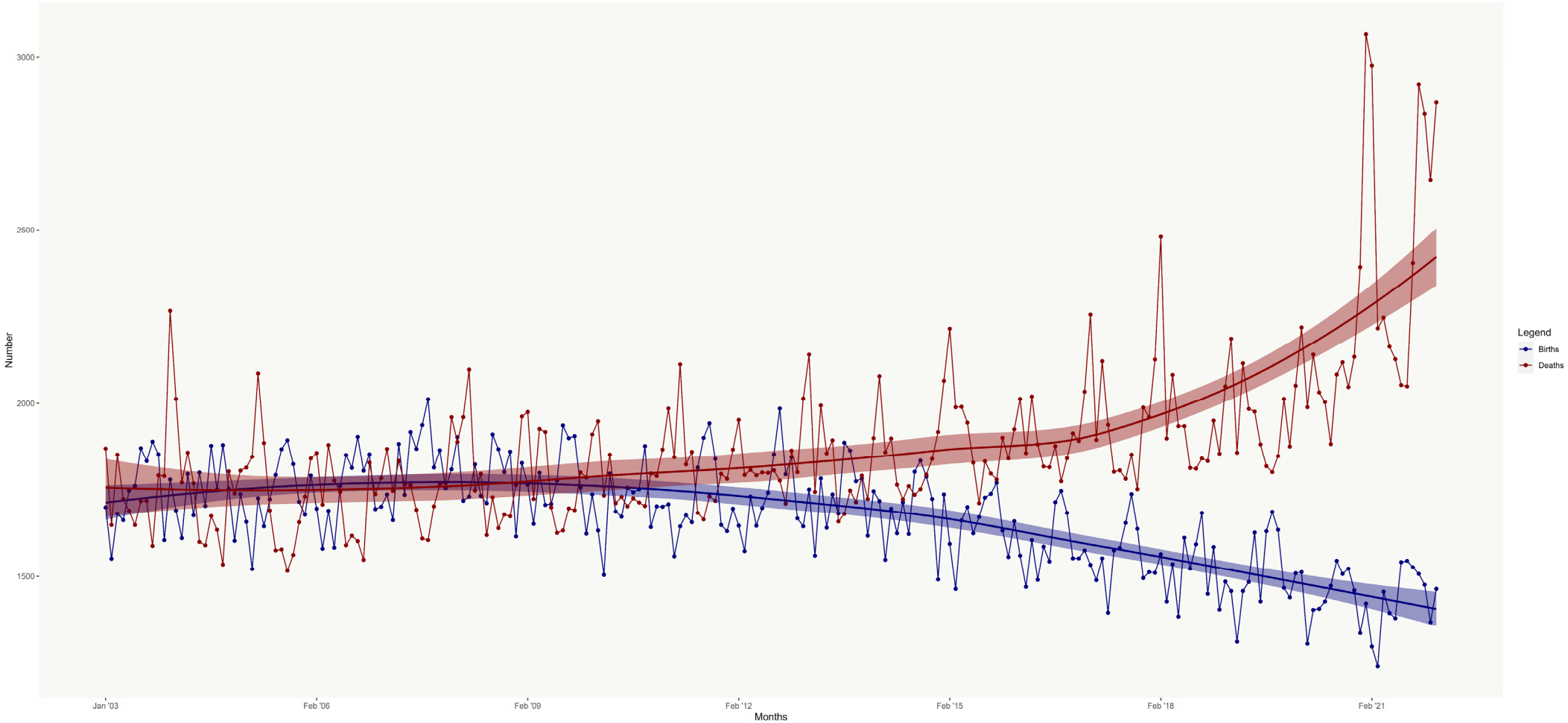
2020-2025 Birth and Death Counts

In 20 states, deaths outnumbered births. Missouri specifically experienced a birth/death deficit of -11,801 from 2020-2023.

	State	Births	Deaths	Demographic Winter
1	Florida	1,152,429	1,255,399	-102,970
2	Pennsylvania	678,195	767,528	-89,333
3	West Virginia	89,321	138,783	-49,462
4	Ohio	671,533	717,272	-45,739
5	Michigan	533,883	578,484	-44,601
6	Alabama	303,445	331,008	-27,563
7	Maine	61,965	88,479	-26,514
8	Oregon	206,366	225,829	-19,463
9	Mississippi	180,776	199,446	-18,670
10	Kentucky	274,520	293,120	-18,600
11	South Carolina	302,975	320,680	-17,705
12	Arkansas	185,644	198,335	-12,691
13	Missouri	359,248	371,049	-11,801
14	New Mexico	110,934	122,407	-11,473
15	New Hampshire	63,191	74,559	-11,368
16	Tennessee	432,116	441,992	-9,876
17	Vermont	26,975	35,644	-8,669
18	Rhode Island	52,996	56,919	-3,923
19	Montana	58,554	62,185	-3,631
20	Delaware	55,054	58,204	-3,150

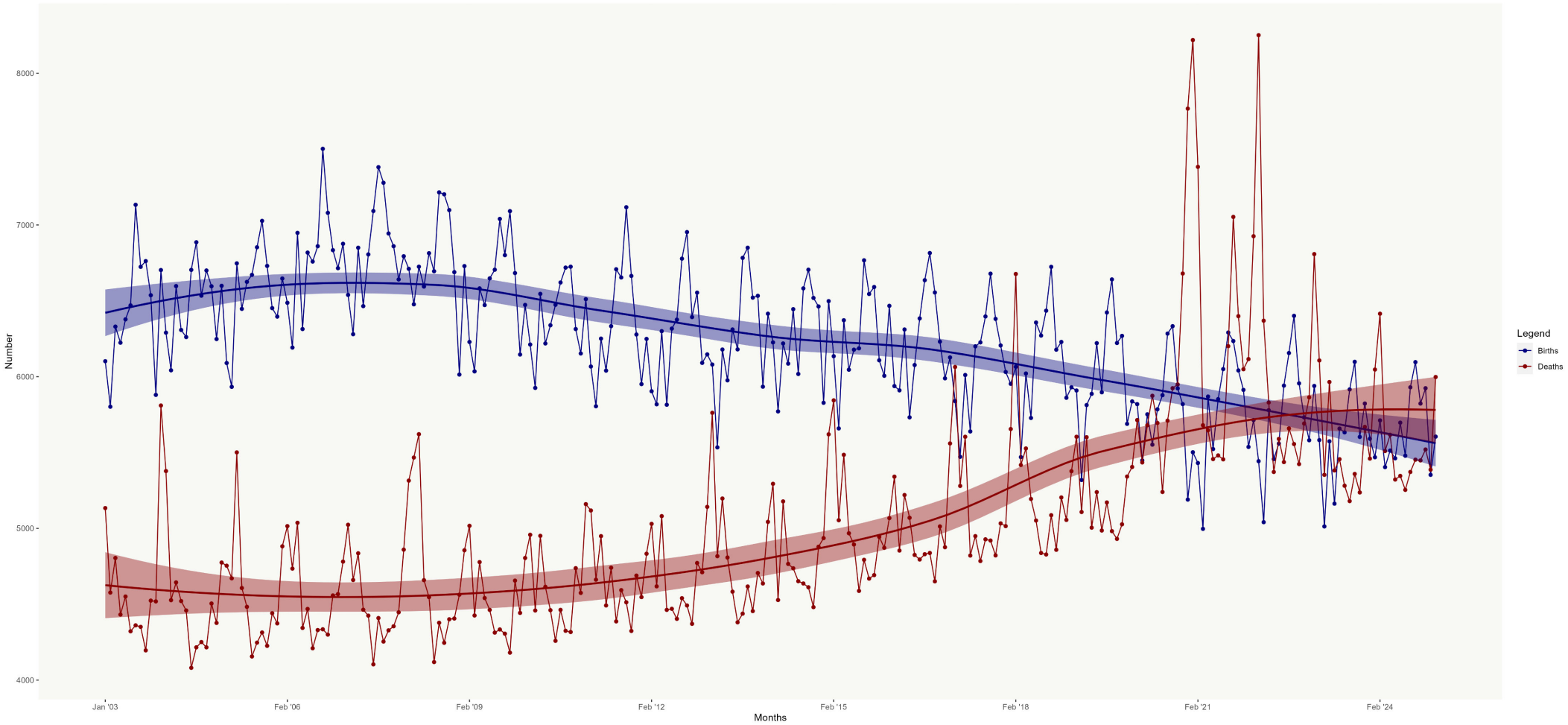
Table: J.S. Onésimo Sandoval, Saint Louis University • Source: U.S. Census, 2025 Population Estimates • Created with Datawrapper

West Virginia
Births and Deaths

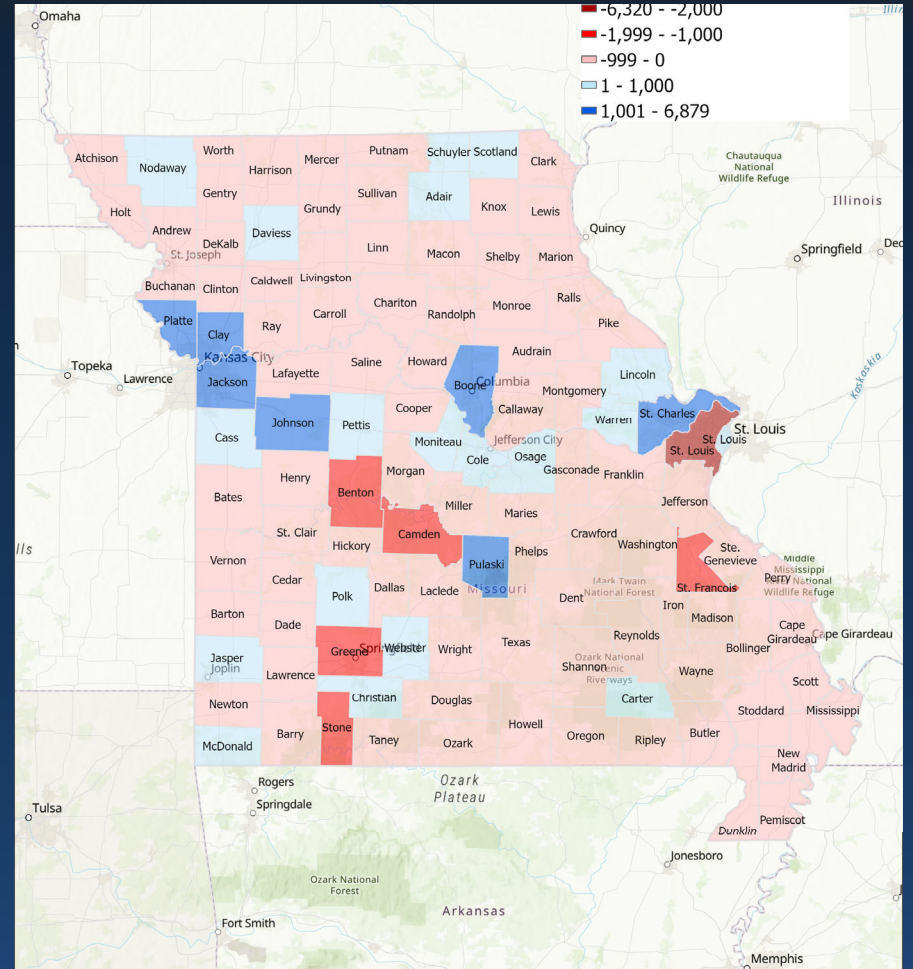
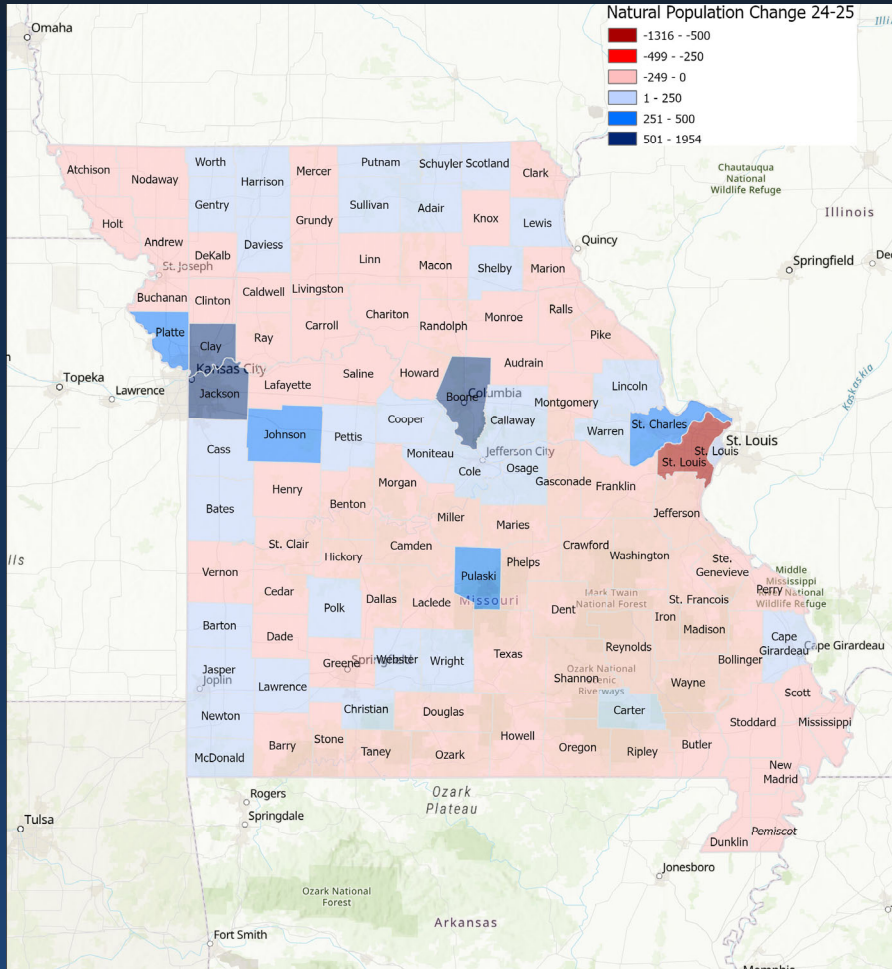


Source: Sandoval, J.S. Onesimo, Data is from CDC.

Missouri
Monthly Birth and Death Trends (2023-2024)



Legend
Births
Deaths



2. FIVE DECADES OF QUESTIONABLE GROWTH

Population Comparison for Selected MSAs in the U.S. - 1970

MSA	1970
1 <i>St. Louis Metro Area 2024 -15 County Boundary</i>	2,520,639
2 Pittsburgh Metro Area	2,401,245
3 Cleveland Metro Area	2,064,194
4 Minneapolis Metro Area	1,813,647
5 Dallas Metro Area	1,555,950
6 Atlanta Metro Area	1,390,164
7 Kansas City Metro Area	1,253,916
8 Denver Metro Area	1,227,529
9 Nashville Metro Area	541,108
10 Orlando Metro Area	428,003
11 Charlotte Metro Area	409,370
12 Austin Metro Area	295,516

Table: J.S. Onésimo Sándoval, Saint Louis University • Source: U.S. Census, 1970, 2010, 2020 • Created with Datawrapper

Population Comparison for Selected MSAs in the U.S. - 2020

MSA		2020 ▼
1	Dallas Metro Area	7,637,387
2	Atlanta Metro Area	6,089,815
3	Minneapolis Metro Area	3,690,261
4	Denver Metro Area	2,963,821
5	St. Louis Metro Area 2024 -15 County Boundary	2,820,253
6	Orlando Metro Area	2,673,376
7	Charlotte Metro Area	2,660,329
8	Pittsburgh Metro Area	2,370,930
9	Austin Metro Area	2,283,371
10	Kansas City Metro Area	2,192,035
11	Cleveland Metro Area	2,088,251
12	Nashville Metro Area	1,989,519

Table: J.S. Onésimo Sándoval, Saint Louis University • Source: U.S. Census, 1970, 2010, 2020 • Created with Datawrapper

Population Comparison for Selected MSAs in the U.S. - Change 1970 to 2020

MSA		Change (1970-2020) ▼
1	Dallas Metro Area	6,081,437
2	Atlanta Metro Area	4,699,651
3	Charlotte Metro Area	2,250,959
4	Orlando Metro Area	2,245,373
5	Austin Metro Area	1,987,855
6	Minneapolis Metro Area	1,876,614
7	Denver Metro Area	1,736,292
8	Nashville Metro Area	1,448,411
9	Kansas City Metro Area	938,119
10	St. Louis Metro Area 2024 -15 County Boundary	299,614
11	Cleveland Metro Area	24,057
12	Pittsburgh Metro Area	-30,315

Table: J.S. Onésimo Sándoval, Saint Louis University • Source: U.S. Census, 1970, 2010, 2020 • Created with Datawrapper

The Leaky Bucket: 50 Years of Domestic Out-Migration in Greater St. Louis

Year	Total Population	Change
1970	2,520,639	0
1980	2,485,566	-35,073
1990	2,560,517	74,951
2000	2,675,343	114,826
2010	2,787,701	112,358
2020	2,820,253	32,552

Table: J.S. Onésimo Sandoval, Saint Louis University • Source: U.S. Census Bureau • Created with Datawrapper

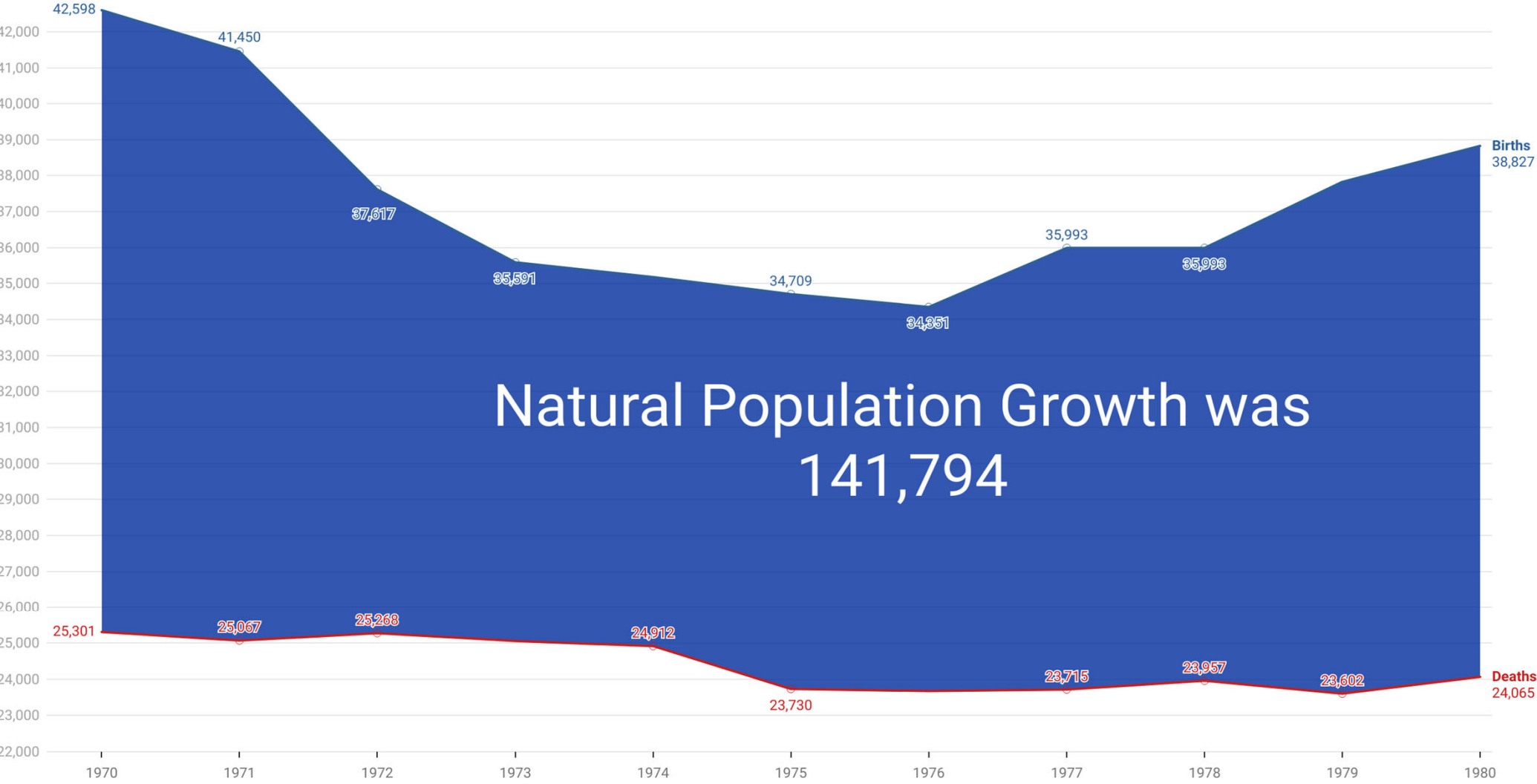
Fifty Years of Population Change for 15 County Saint Louis MSA

The 15-county Saint Louis MSA has recorded more deaths than births since 2020, and today 10 of its 15 counties continue to experience this trend. Warren, Clinton, Saint Charles Counties and the City of Saint Louis are also projected to shift into a pattern of more deaths than births.

County	1970	2020	Change (1970-2020)
Saint Louis MSA	2520639	2820253	299614 ▼
St. Charles County, Missouri	92,954	405,262	312,308
Jefferson County, Missouri	105,248	226,739	121,491
St. Louis County, Missouri	951,353	1,004,125	52,772
Franklin County, Missouri	55,116	104,682	49,566
Lincoln County, Missouri	18,041	59,574	41,533
Warren County, Missouri	9,699	35,532	25,833
Monroe County, Illinois	18,831	34,962	16,131
Madison County, Illinois	250,934	265,859	14,925
Clinton County, Illinois	28,315	36,899	8,584
Jersey County, Illinois	18,492	21,512	3,020
Bond County, Illinois	14,012	16,725	2,713
Macoupin County, Illinois	44,557	44,967	410
Calhoun County, Illinois	5,675	4,437	-1,238
St. Clair County, Illinois	285,176	257,400	-27,776
St. Louis City, Missouri	622,236	301,578	-320,658

Table: J.S. Onésimo Sandoval, Saint Louis University • Source: U.S. Census 1970 and 2020 • Created with Datawrapper

Saint Louis MSA Natural Population Growth Trends, 1970-1980



Natural Population Growth was
141,794

Chart: J.S. Onésimo Sandoval, Saint Louis University • Source: CDC Vital Statistics -1970-1980. • Created with Datawrapper

WHEN MORE LEAVE THAN ARRIVE: THE DEMOGRAPHIC COST OF NEGATIVE MIGRATION IN THE SAINT LOUIS MSA

Saint Louis MSA - Population Estimates of Domestic Migration

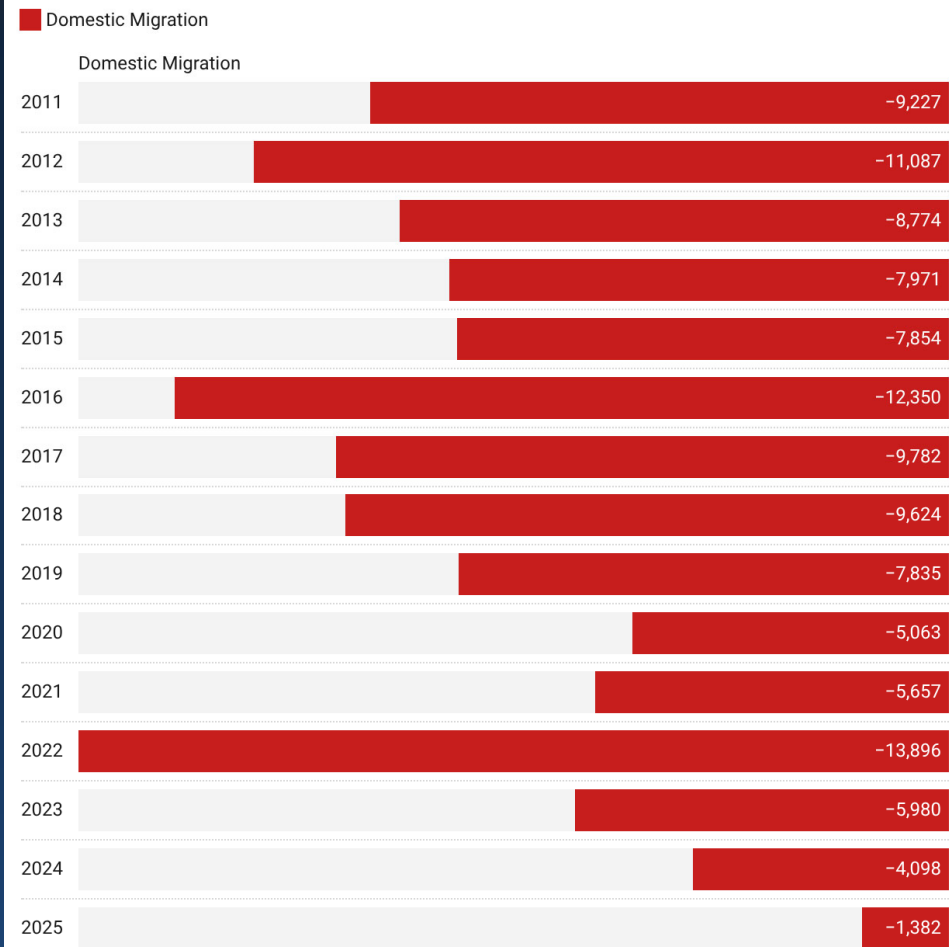
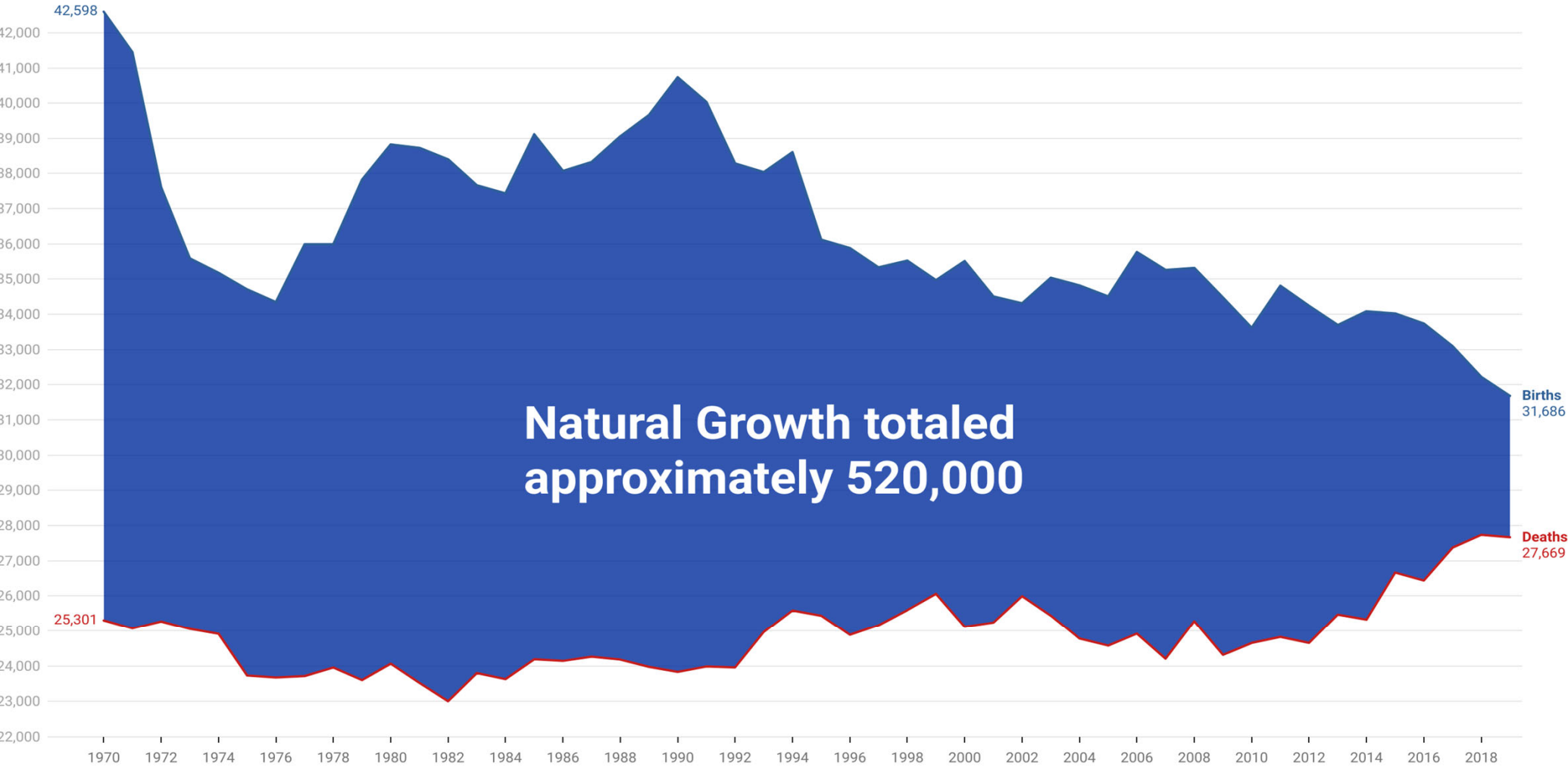


Chart Created by J.S. Onésimo Sandoval, Saint Louis University.

Chart: J.S. Onésimo Sandoval, Saint Louis University • Source: Annual and Cumulative Estimates of the Components of Resident Population Change for Counties in the United States: April 1, 2023 to July 1, 2024, U.S. Census Bureau, Population Division • Created with Datawrapper

Trends In Natural Population Growth/Decline Saint Louis MSA 1970-2019

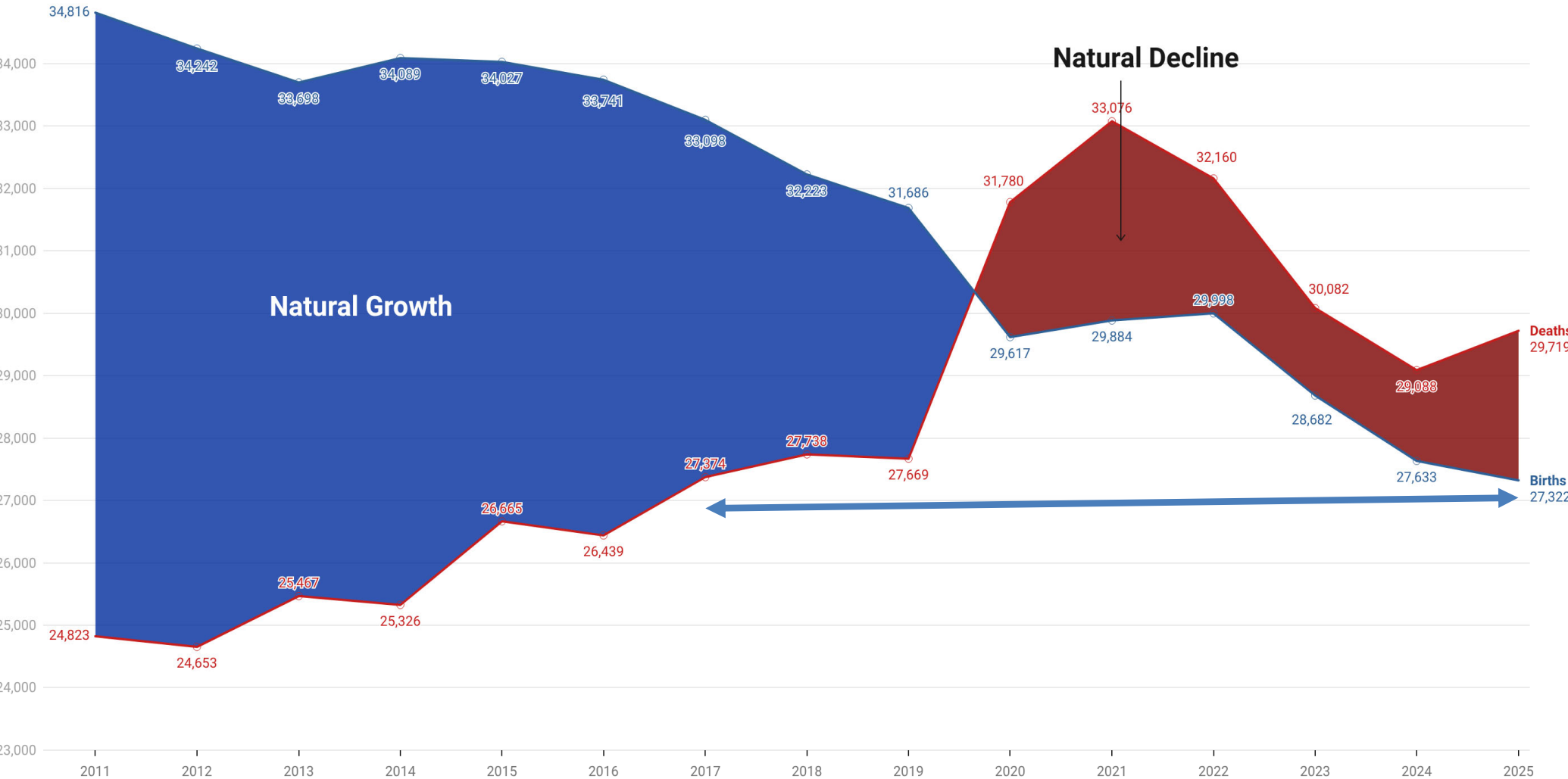


Year data is based on published year estimates from the Population Estimates.

Chart: J.S. Onésimo Sandoval, Saint Louis University • Source: Annual and Cumulative Estimates of the Components of Resident Population Change for Counties in the United States U.S. Census Bureau, Population Division and CDC Vital Statistics 1970-2010 • Created with Datawrapper

3. NATURAL POPULATION DECLINE

Trends In Natural Population Growth/Decline Saint Louis MSA - 2025 Data



Year data is based on published year estimates from the Population Estimates.

Chart: J.S. Onésimo Sandoval, Saint Louis University • Source: Annual and Cumulative Estimates of the Components of Resident Population Change for Counties in the United States U.S. Census Bureau, Population Division • Created with Datawrapper

Rate of Natural Population Decline per 1000 residents (Birth Rate - Death Rate) among the 50 Largest U.S. Metros (2025).

The St. Louis metro continues to experience more deaths than births and ranks third in the nation among the largest metros for natural population decline.

	NAME	Natural Rate of Change
1	Pittsburgh, PA	-3.22
2	Cleveland, OH	-1.12
3	St. Louis, MO-IL	-0.85
4	Tampa-St. Petersburg-Clearwater, FL	-0.85
5	Providence-Warwick, RI-MA	-0.26
6	Hartford-West Hartford-East Hartford, CT	-0.08

Table: J.S. Onésimo Sandoval, Saint Louis University • Source: U.S. Census Bureau, Annual Estimates of the Resident Population for Counties in Missouri: April 1, 2020 to July 1, 2025 • Created with Datawrapper

U.S. Metros Experiencing the Greatest Decline in Births

	MSA	Change In Births (2021-2025) ▲
1	Los Angeles-Long Beach-Anaheim, CA	-4,043
2	Chicago-Naperville-Elgin, IL-IN	-3,916
3	St. Louis, MO-IL	-2,562
4	Washington-Arlington-Alexandria, DC-VA-MD-WV	-2,454
5	San Francisco-Oakland-Fremont, CA	-2,219
6	Riverside-San Bernardino-Ontario, CA	-2,077
7	Virginia Beach-Chesapeake-Norfolk, VA-NC	-1,795
8	Detroit-Warren-Dearborn, MI	-1,436
9	Baltimore-Columbia-Towson, MD	-1,341
10	San Diego-Chula Vista-Carlsbad, CA	-1,122

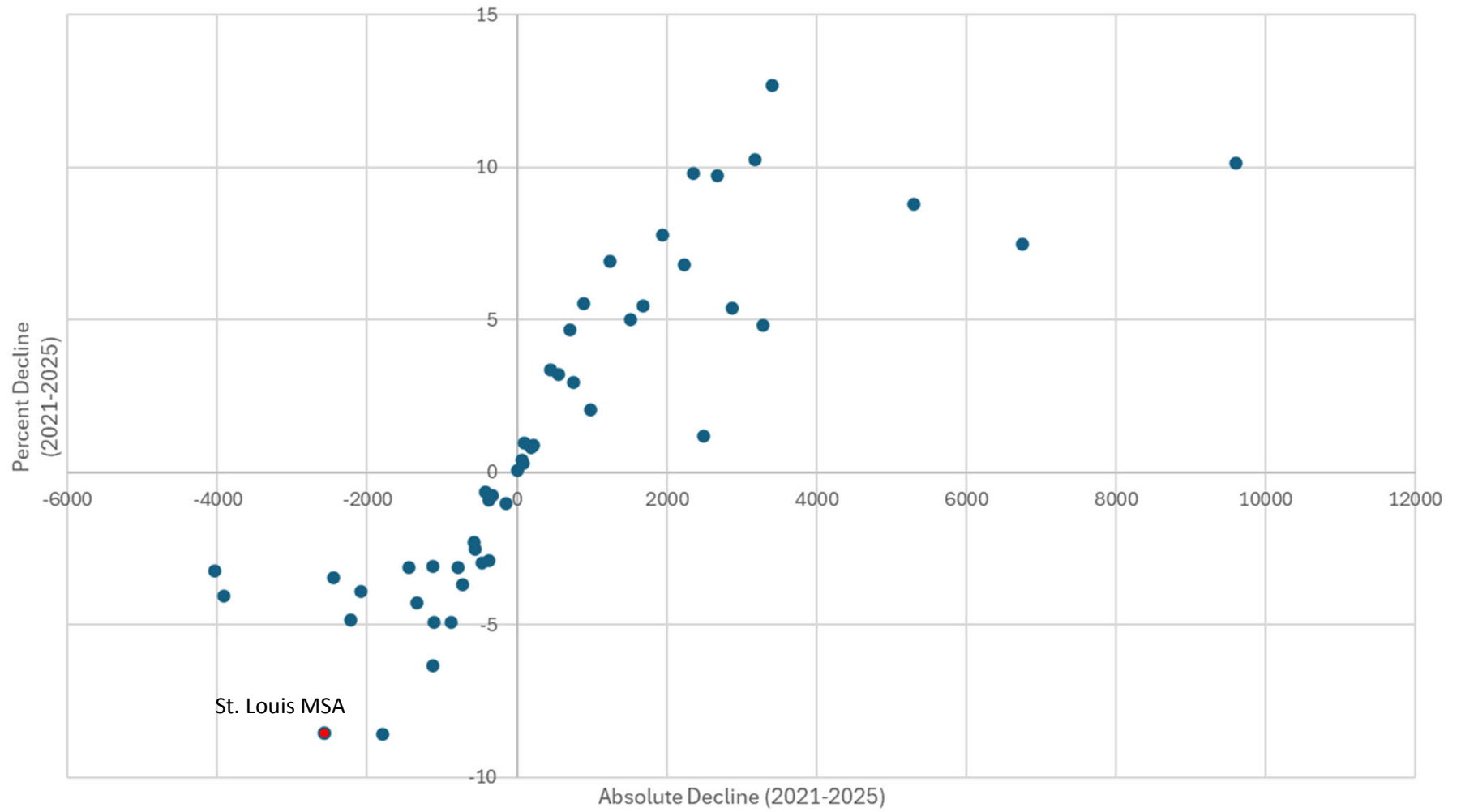
Table: J.S. Onésimo Sandoval, Saint Louis University • Source: U.S. Census Bureau, Population Division, Annual and Cumulative Estimates of the Components of Resident Population Change for Metropolitan Statistical Areas in the United States: April 1, 2020 to July 1, 2025 • Created with Datawrapper

U.S. Metros Experiencing the Greatest Percent Decline in Births

	MSA	Percent Change In Births (2021-2025)
1	St. Louis, MO-IL	-8.57%
2	Virginia Beach-Chesapeake-Norfolk, VA-NC	-8.57%
3	Memphis, TN-MS-AR	-6.35%
4	Milwaukee-Waukesha, WI	-4.93%
5	Pittsburgh, PA	-4.92%
6	San Francisco-Oakland-Fremont, CA	-4.86%
7	Baltimore-Columbia-Towson, MD	-4.29%
8	Chicago-Naperville-Elgin, IL-IN	-4.04%
9	Riverside-San Bernardino-Ontario, CA	-3.91%
10	San Jose-Sunnyvale-Santa Clara, CA	-3.67%

Table: J.S. Onésimo Sandoval, Saint Louis University • Source: U.S. Census Bureau, Population Division, Annual and Cumulative Estimates of the Components of Resident Population Change for Metropolitan Statistical Areas in the United States: April 1, 2020 to July 1, 2025 • Created with Datawrapper

Decline In Births Among the Top 50 Metros (2021-2025)



U.S. Metros Facing the Sharpest Drop in Births (2021–2025)

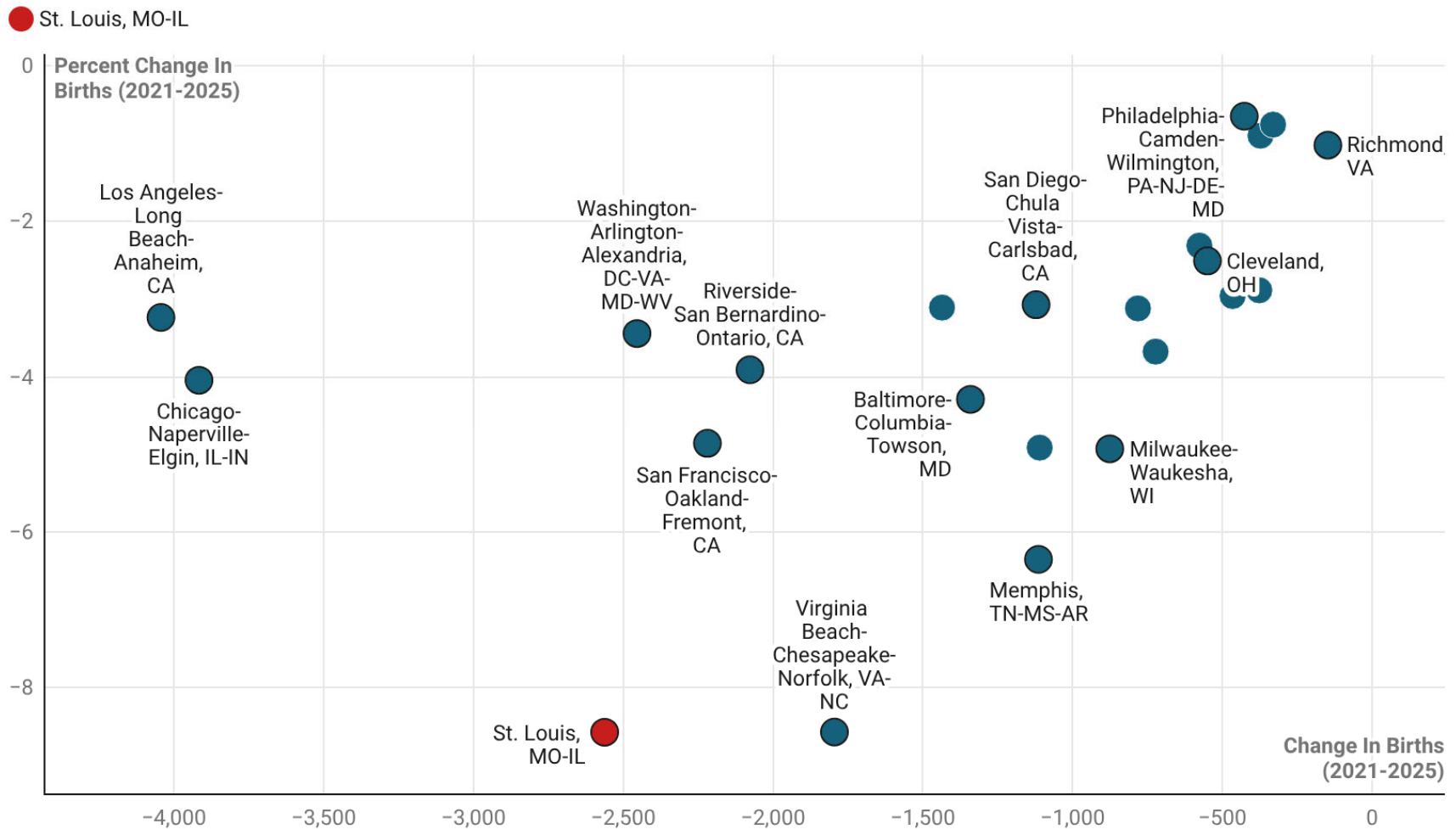


Chart: J.S. Onésimo Sandoval, Saint Louis University • Source: U.S. Census Bureau, Population Division, Annual and Cumulative Estimates of the Components of Resident Population Change for Metropolitan Statistical Areas in the United States: April 1, 2020 to July 1, 2025 • Created with Datawrapper

U.S. Metros Experiencing an Increase in Births (2021–2025)

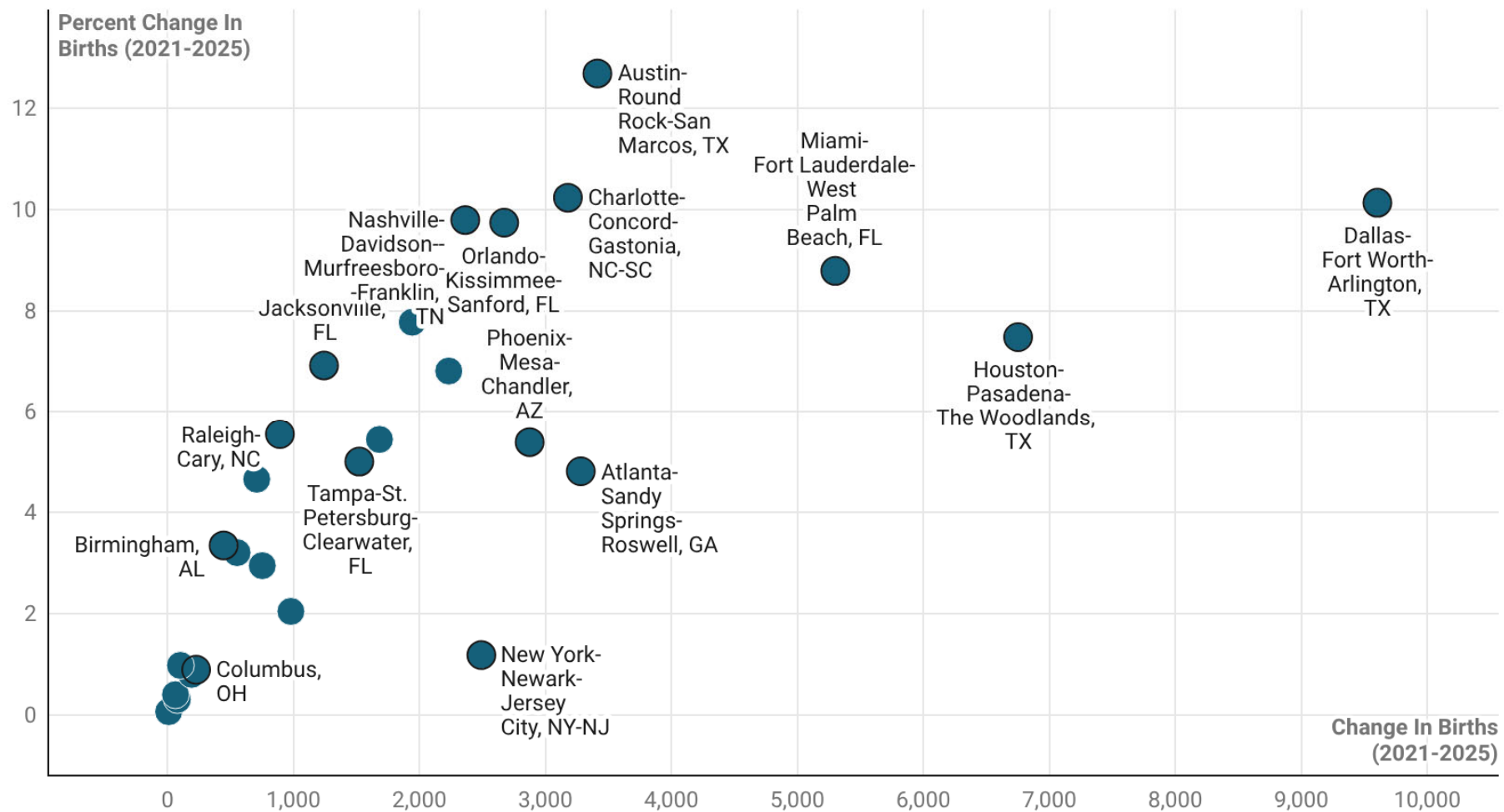


Chart: J.S. Onésimo Sandoval, Saint Louis University • Source: U.S. Census Bureau, Population Division, Annual and Cumulative Estimates of the Components of Resident Population Change for Metropolitan Statistical Areas in the United States: April 1, 2020 to July 1, 2025 • Created with Datawrapper

Peer Regional Comparisons - Birth and Migration Trends

● St. Louis, MO-IL ● Sacramento-Roseville-Folsom, CA ● Las Vegas-Henderson-North Las Vegas, NV

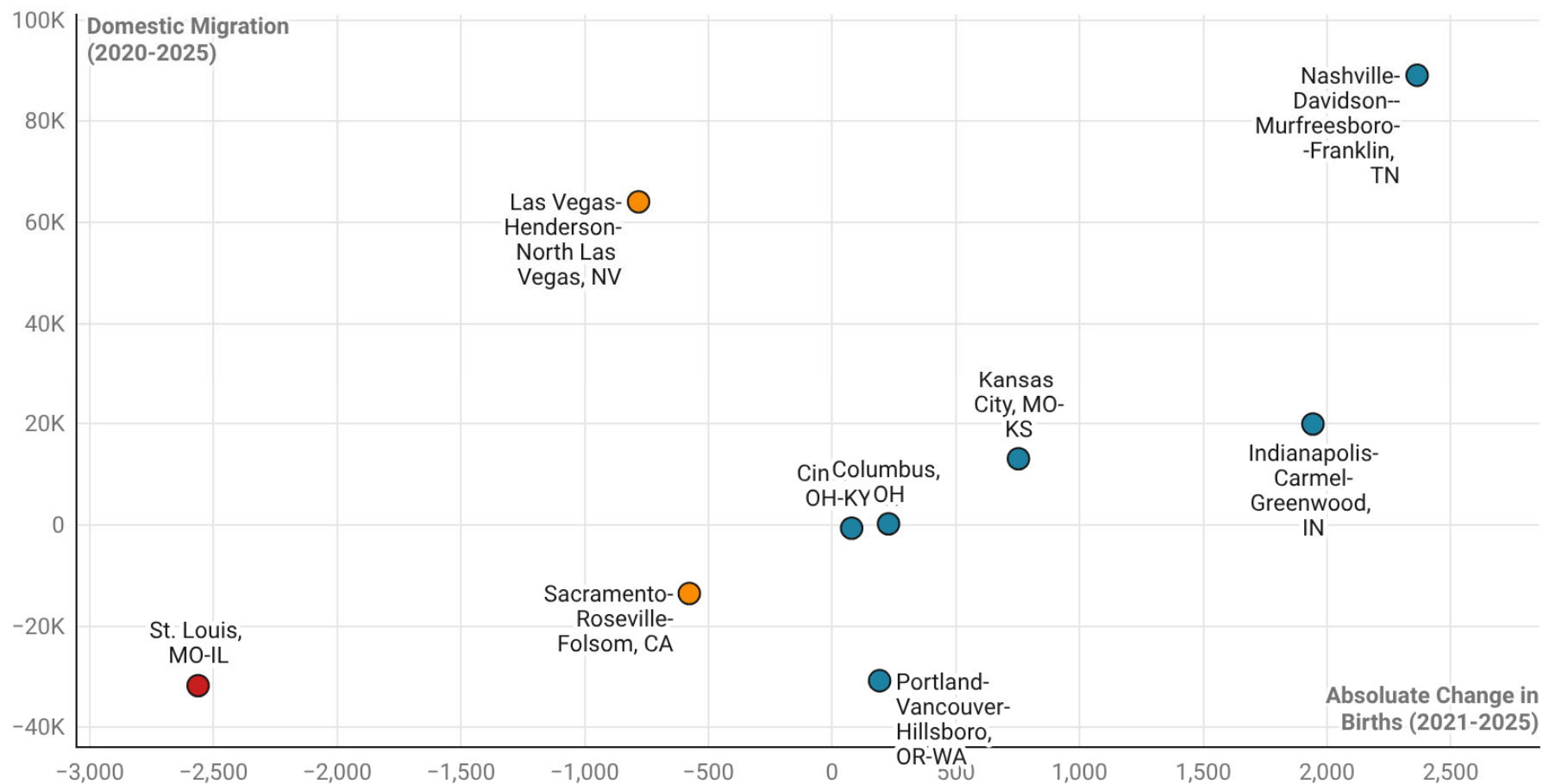


Chart: J.S. Onésimo Sandoval, Saint Louis University • Source: U.S. Census Bureau, Population Division, Annual and Cumulative Estimates of the Components of Resident Population Change for Metropolitan Statistical Areas in the United States: April 1, 2020 to July 1, 2025 • Created with Datawrapper

Peer Regional Comparisons - Birth Trends and Population 62 and Older

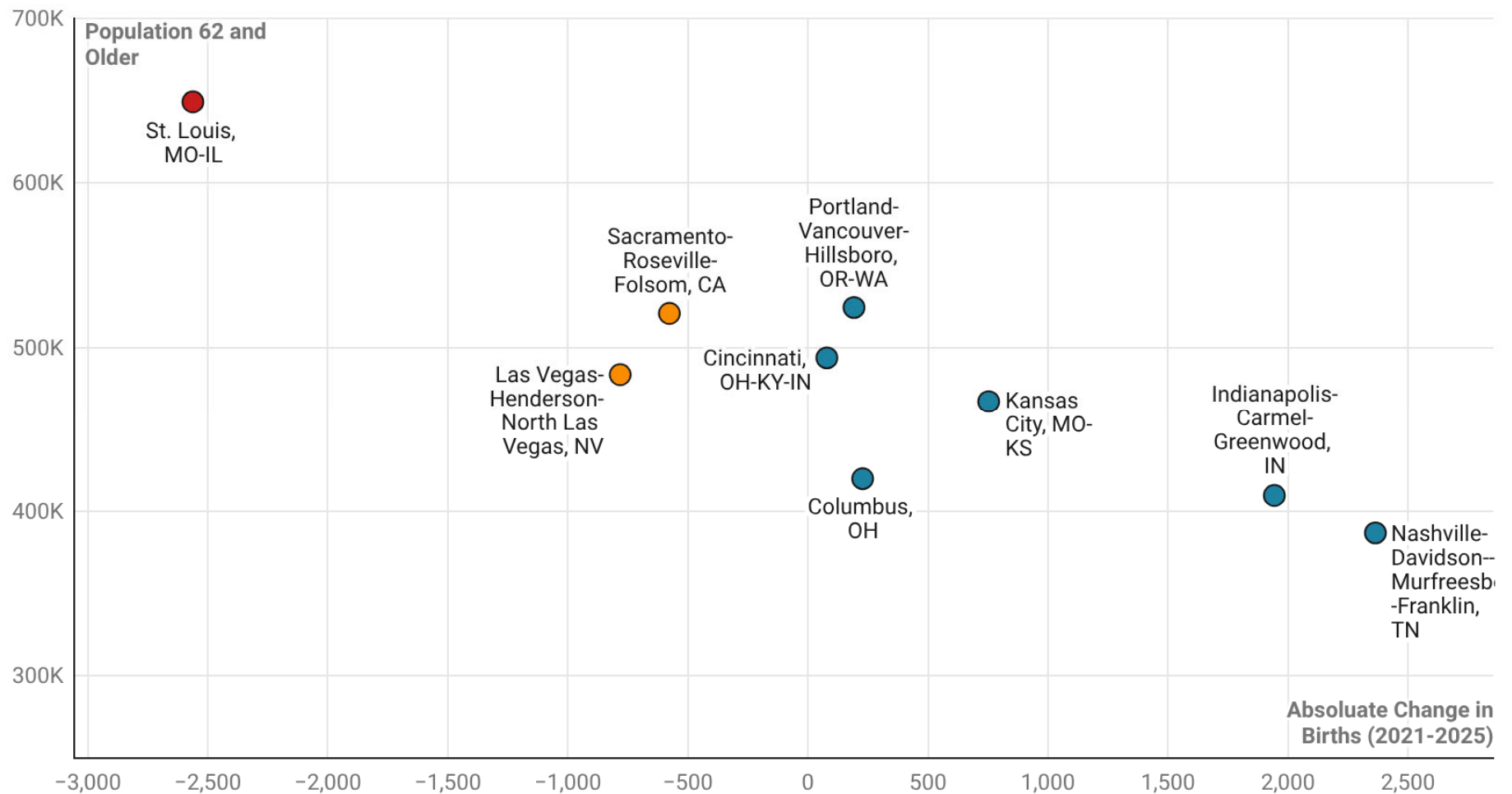
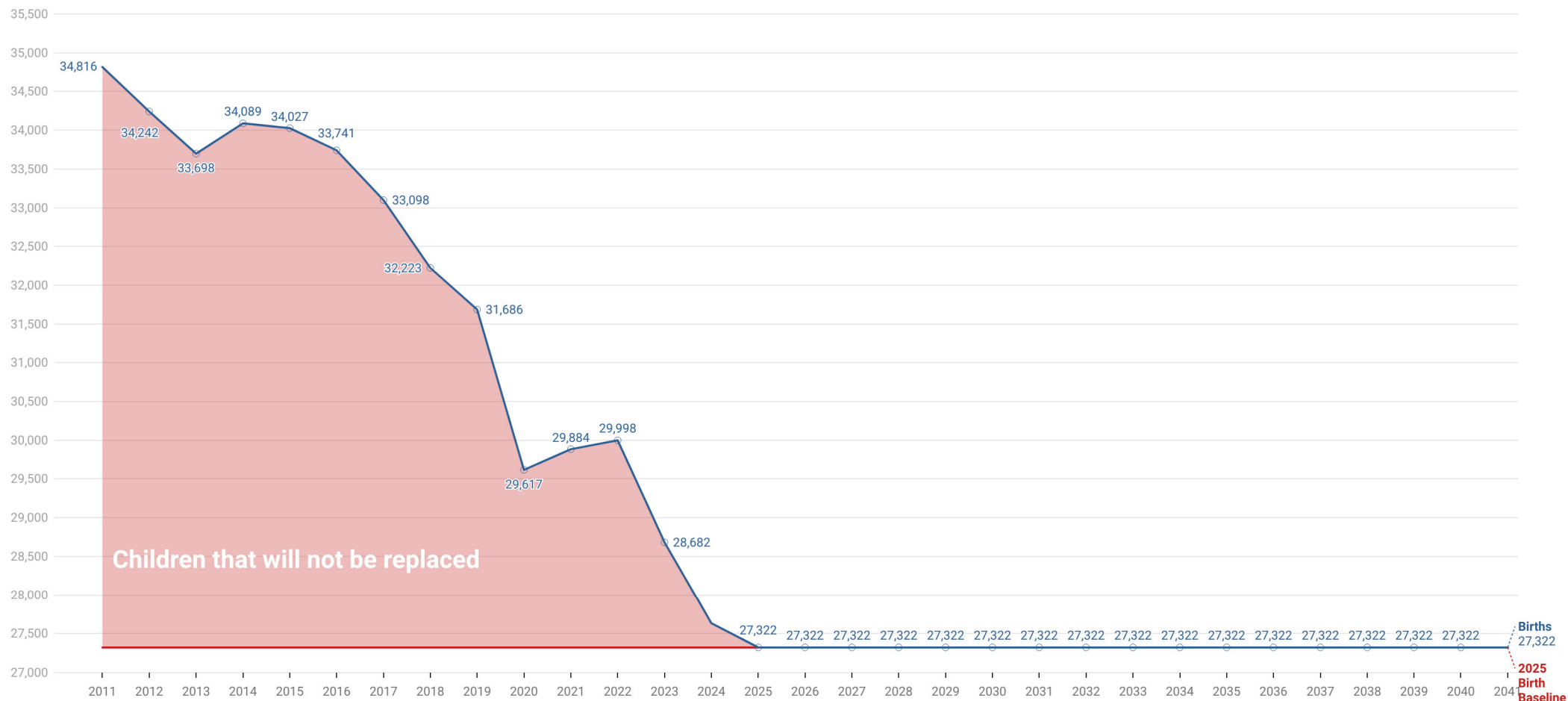


Chart: J.S. Onésimo Sandoval, Saint Louis University • Source: U.S. Census Bureau, Population Division, Annual and Cumulative Estimates of the Components of Resident Population Change for Metropolitan Statistical Areas in the United States: April 1, 2020 to July 1, 2025 • Created with Datawrapper

4. A FUTURE WITH DECLINING BIRTHS

Children born between 2011 and 2025 represent a cohort that will not be fully replaced under current fertility levels

65K children born after 2010 will not be replaced.



Year data is based on published year estimates from the Population Estimates.

Chart: J.S. Onésimo Sandoval, Saint Louis University • Source: Annual and Cumulative Estimates of the Components of Resident Population Change for Counties in the United States U.S. Census Bureau, Population Division • Created with Datawrapper

Children Under 5 Years Old in the 15-County St. Louis MSA - 2025 Birth Data

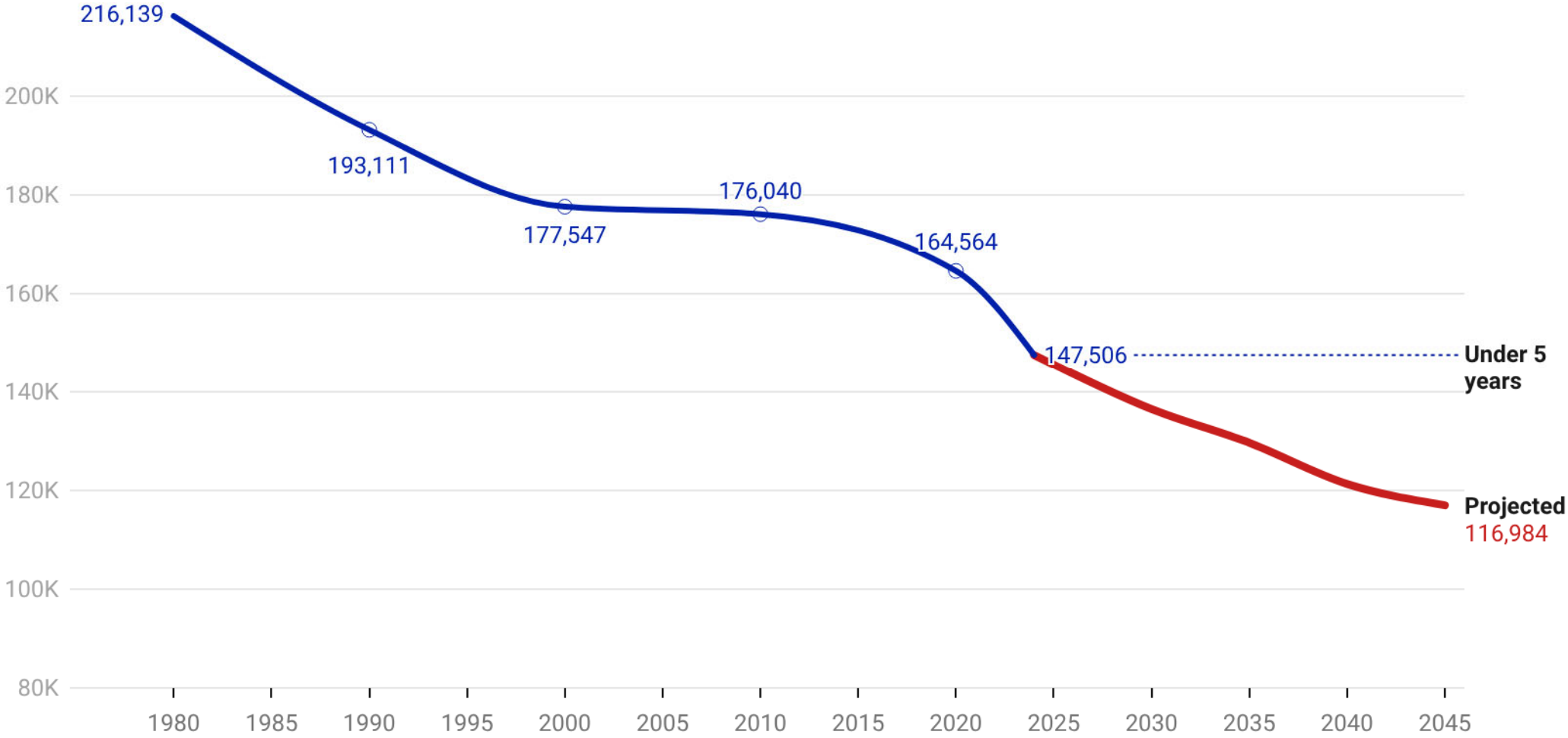


Chart: J.S. Onésimo Sandoval, Saint Louis University • Source: U.S. Census, 1980-2010 and 2020 and 2024 populations estimates. • Created with Datawrapper

Forecasting Births in the 15-County St. Louis MSA - With 2025

Model 1 projects 1 096,381 births, and Model 2 projects 1,306,250 births. For comparison, the region recorded an average of 1,844,601 births between 1970 and 2020, highlighting the projected decline under both scenarios.

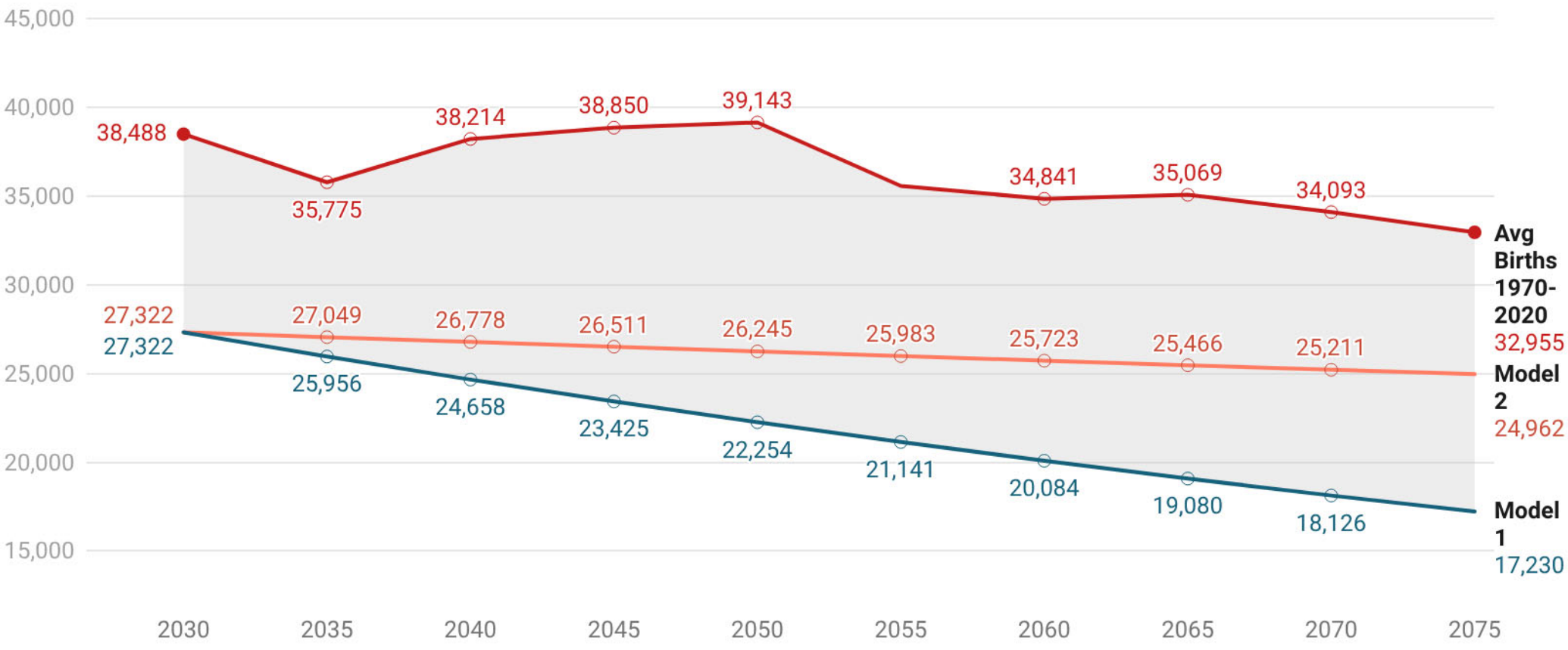


Chart: J.S. Onésimo Sandoval, Saint Louis University • Source: Calculations from J.S. Onésimo Sandoval, Saint Louis University • Created with Datawrapper

50 and Under for the Saint Louis MSA

Assuming No Net Positive Migration

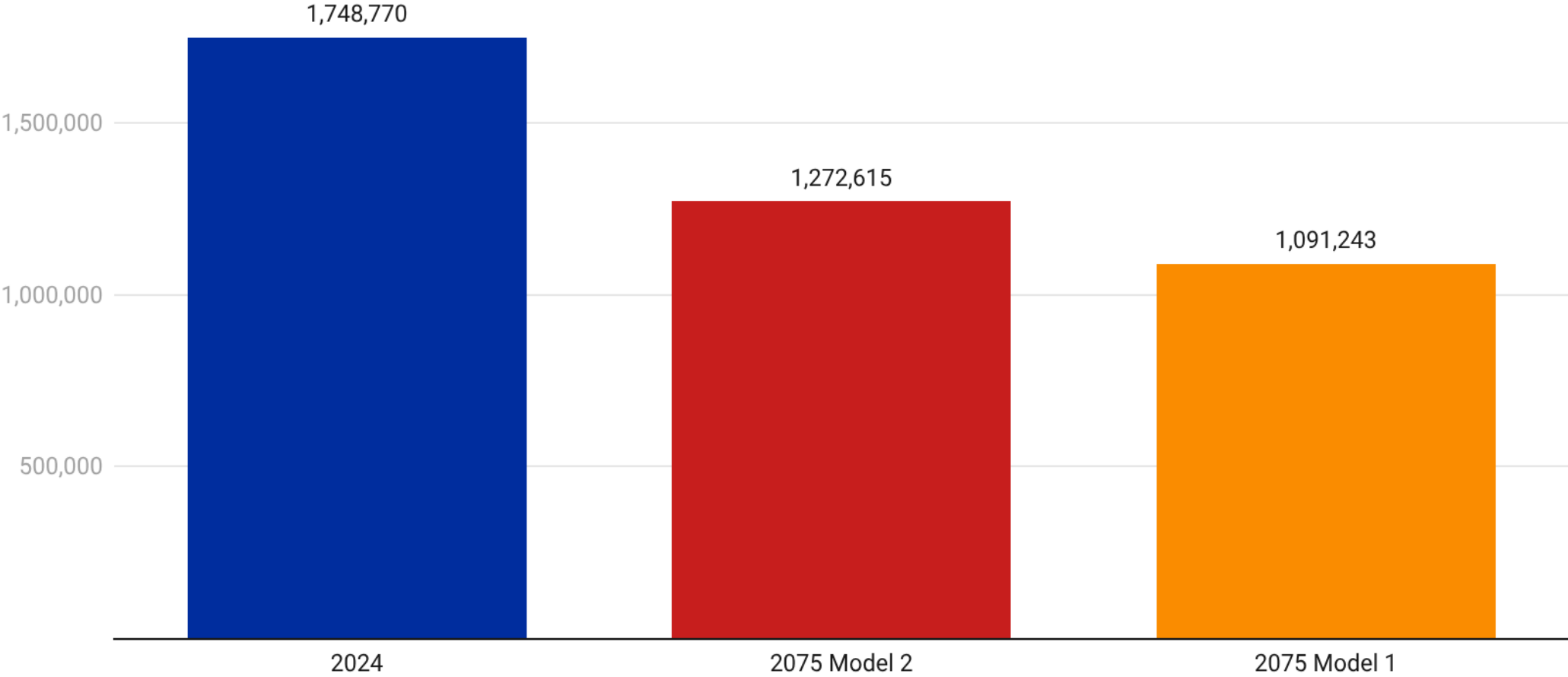


Chart: J.S. Onésimo Sandoval, Saint Louis University • Created with Datawrapper

5. DEMOGRAPHIC TRANSITIONS IN THE SAINT LOUIS MSA


Deaths and Births from 2020 to 2025

St. Louis population grew in 2024 thanks to international migration, U.S. Census data shows

[✉](#) [f](#) [in](#) [X](#) [🖨](#) [📄](#) [🔗 Unlock URL](#) [📄 Order Reprints](#) [📁 Gift this Article](#)



Around 63% of St. Louis-area companies are hiring, in a sign of the region's strong post-COVID recovery.
PETERPENCIL VIA GETTY

 By [Maddy Simpson](#) – Data Editor, St. Louis Business Journal
Mar 13, 2025 **Updated** Mar 13, 2025 9:34am CDT

International migration has been the only source of population growth in the region.

Source: <https://www.bizjournals.com/stlouis/news/2025/03/13/st-louis-population-growth-international-migration.html>

Saint Louis MSA - Population Estimates of Migration - 2011-2025

■ Domestic Migration ■ International Migration ■ Net Migration

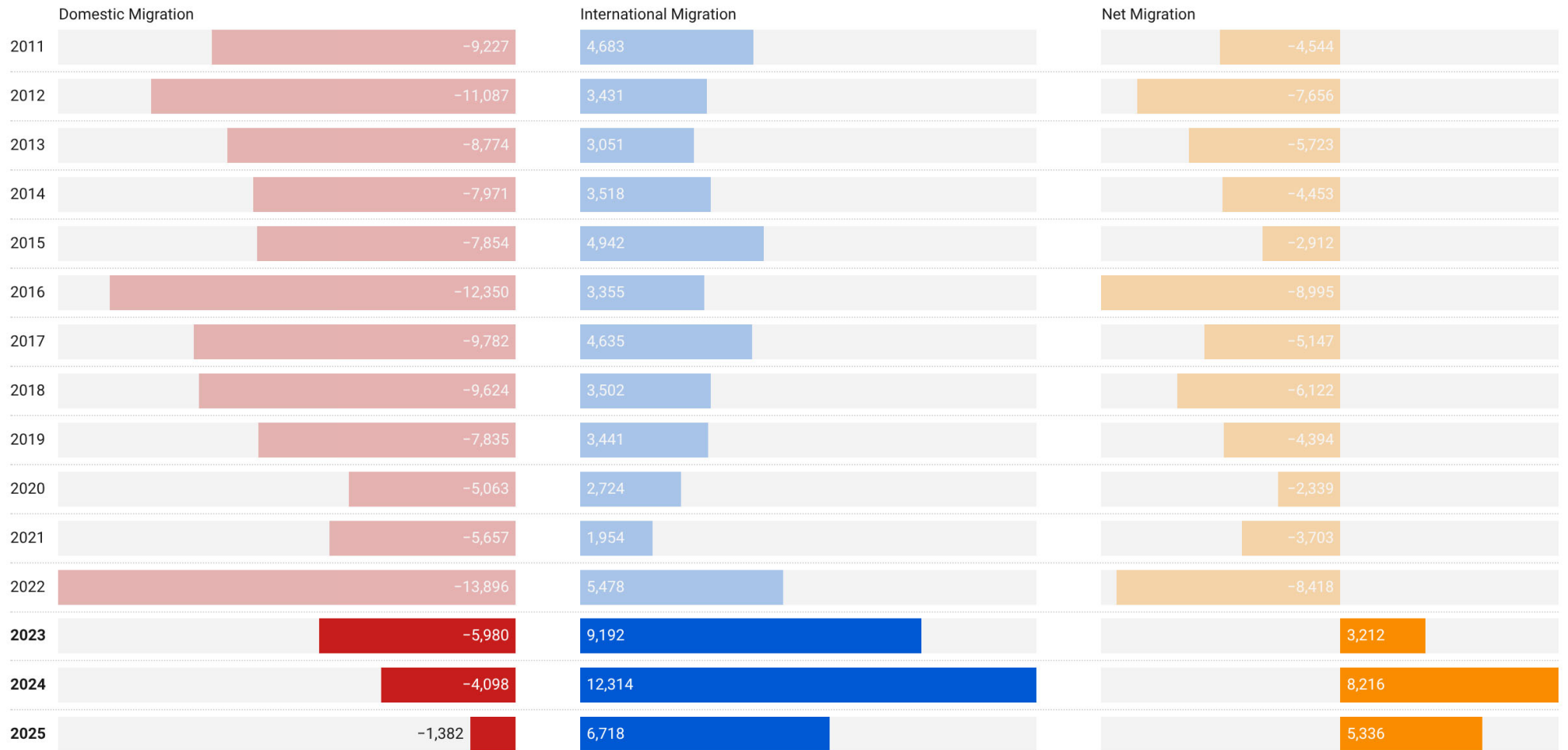


Chart Created by J.S. Onésimo Sandoval, Saint Louis University.

Chart: J.S. Onésimo Sandoval, Saint Louis University • Source: Annual and Cumulative Estimates of the Components of Resident Population Change for Counties in the United States: April 1, 2023 to July 1, 2025, U.S. Census Bureau, Population Division • Created with Datawrapper

Saint Louis 15-County Population - Natural Population Change and Domestic Migration

● Madison County, IL ● St. Louis city, MO ● St. Clair County, IL ● St. Louis County, MO

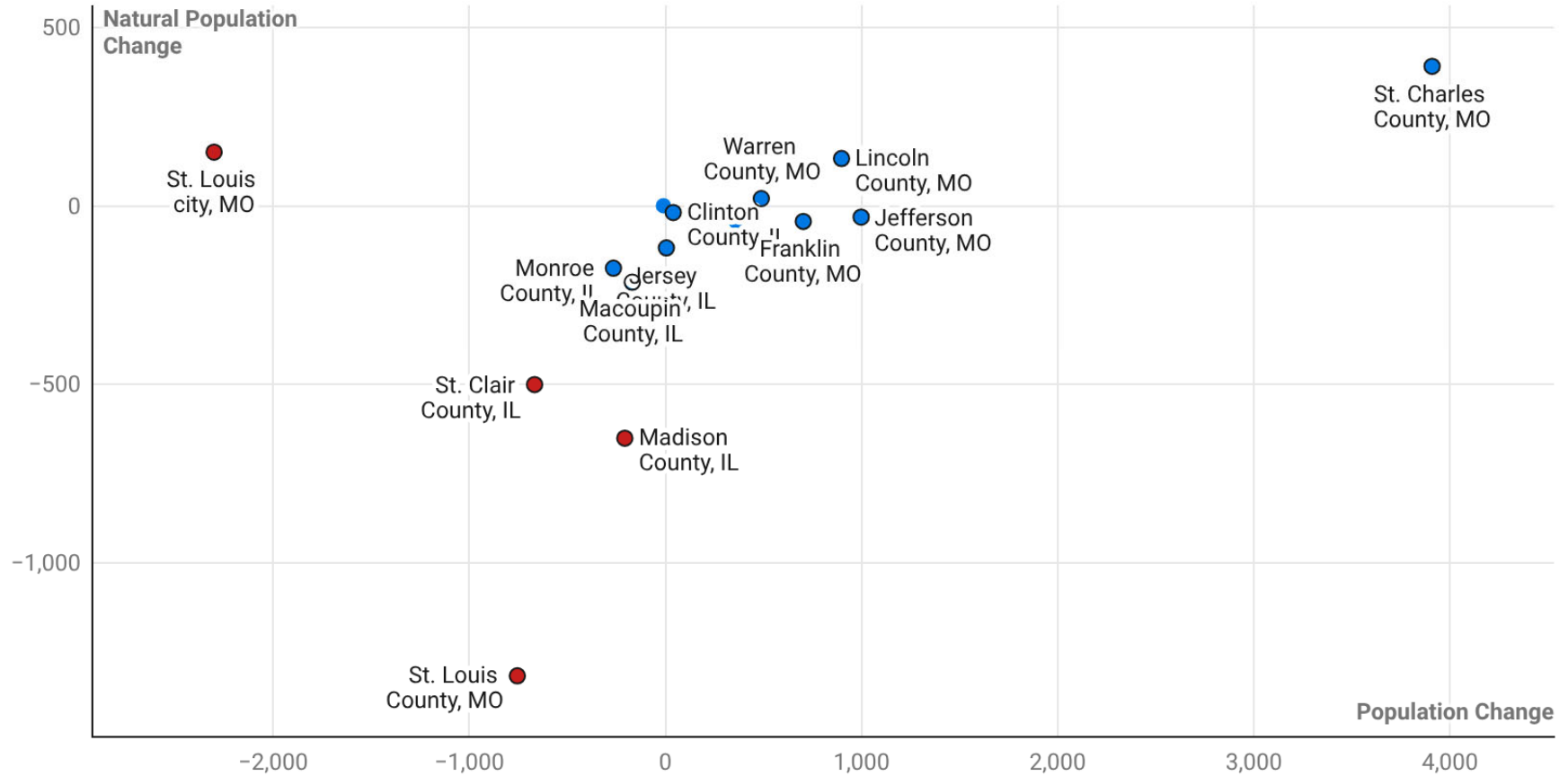


Chart: J.S. Onésimo Sandoval, Saint Louis University • Source: U.S. Census Bureau, Annual Estimates of the Resident Population for Counties in Missouri: April 1, 2020 to July 1, 2025 • Created with Datawrapper

Population Growth in Saint Charles, Missouri (2020–2024) Driven by Residents Aged 60 and Over

Saint Charles, Missouri: Population Change by Age Group

Population Change from April 1, 2020 to July 1, 2024

Age Group	2020	2024	Change (2020-2024)
Total	405,265	423,726	18,461
Age 0-4	23,004	21,898	-1,106
Age 5-9	25,707	25,648	-59
Age 10-14	28,324	27,338	-986
Age 15-19	26,342	27,424	1,082
Age 20-24	23,329	25,475	2,146
Age 25-29	23,950	24,643	693
Age 30-34	26,755	27,647	892
Age 35-39	29,732	29,635	-97
Age 40-44	26,766	31,022	4,256
Age 45-49	25,567	26,700	1,133
Age 50-54	25,777	25,573	-204
Age 55-59	29,130	25,613	-3,517
Age 60-64	26,971	28,223	1,252
Age 65-69	21,311	25,493	4,182
Age 70-74	16,953	19,582	2,629
Age 75-79	11,306	14,685	3,379
Age 80-84	7,238	9,056	1,818
Age 85+	7,103	8,071	968

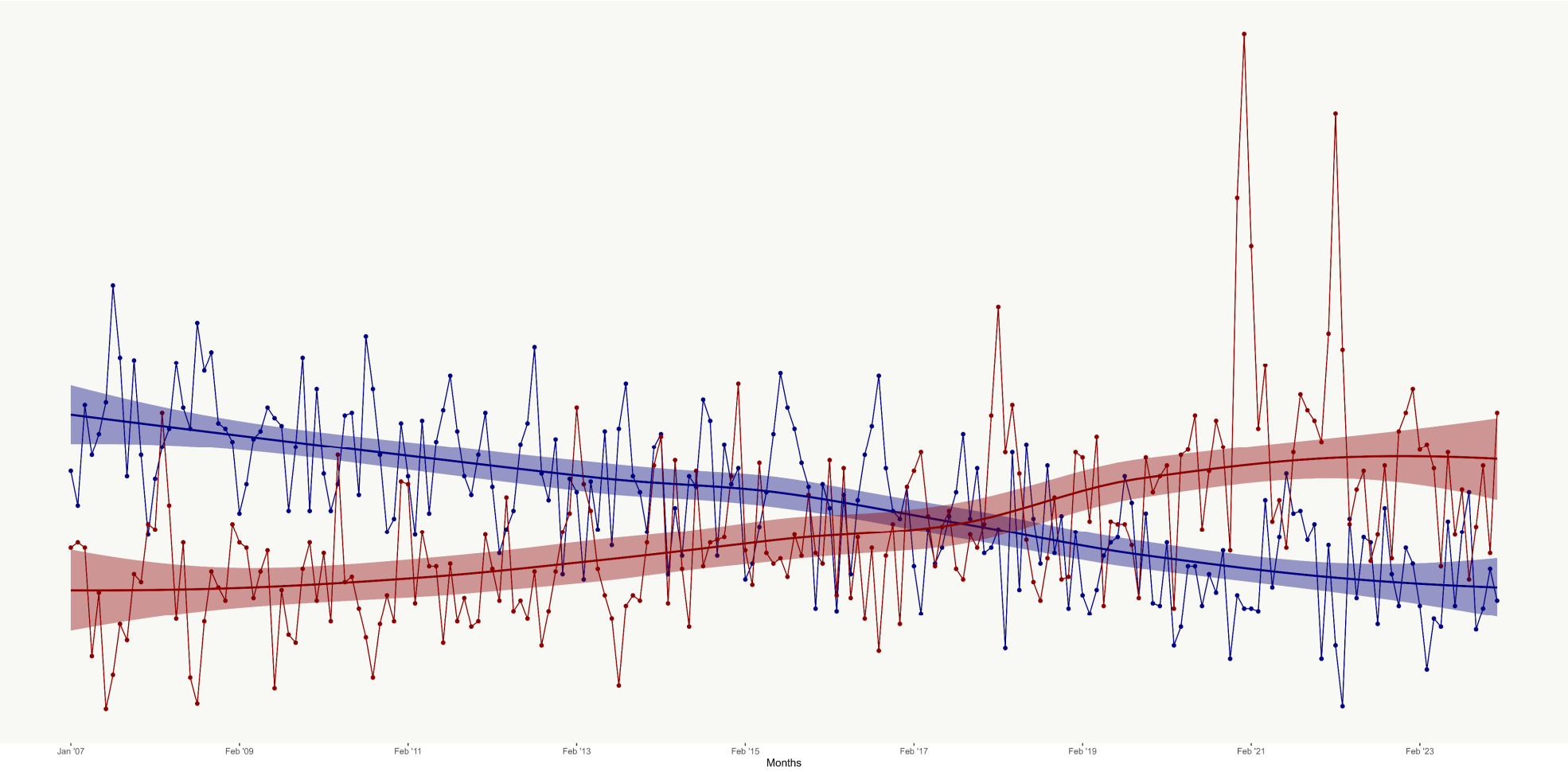
Table: J.S. Onésimo Sandoval, Saint Louis University • Source: U.S. Population Estimates, Annual County Resident Population Estimates by Age, Sex, Race, and Hispanic Origin: April 1, 2020 to July 1, 2024 • Created with Datawrapper

6. COVID-19 WINTER VS. A DEMOGRAPHIC WINTER

Deaths, Births and An Aging Population

Madison County Is Entering the First Phase of a Demographic Winter

Madison
Monthly Birth and Death Trends (2007–2023)

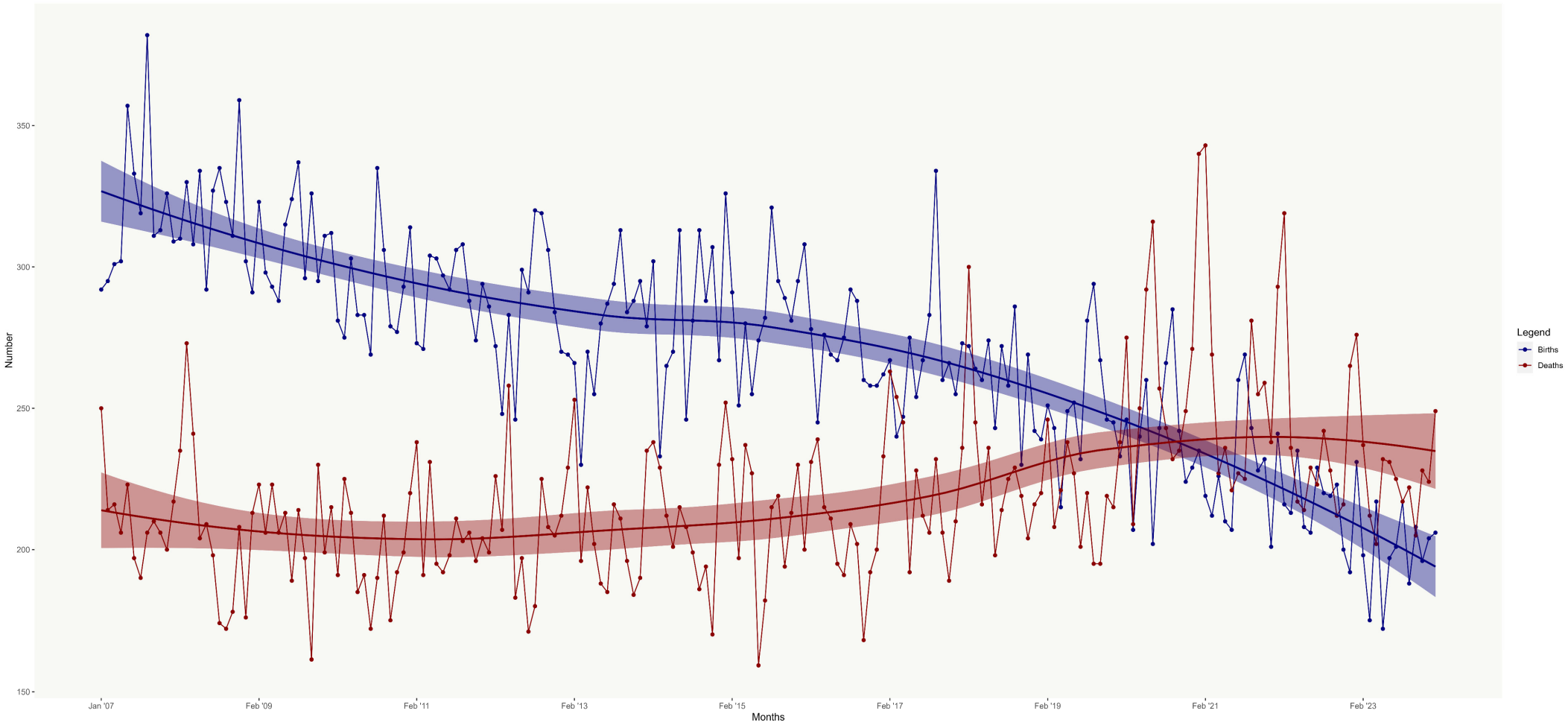


Legend
Births
Deaths

Source: Sahnoual, J.S. OneAtlas. Data is from CDC.

Saint Clair County Is Entering the First Phase of a Demographic Winter

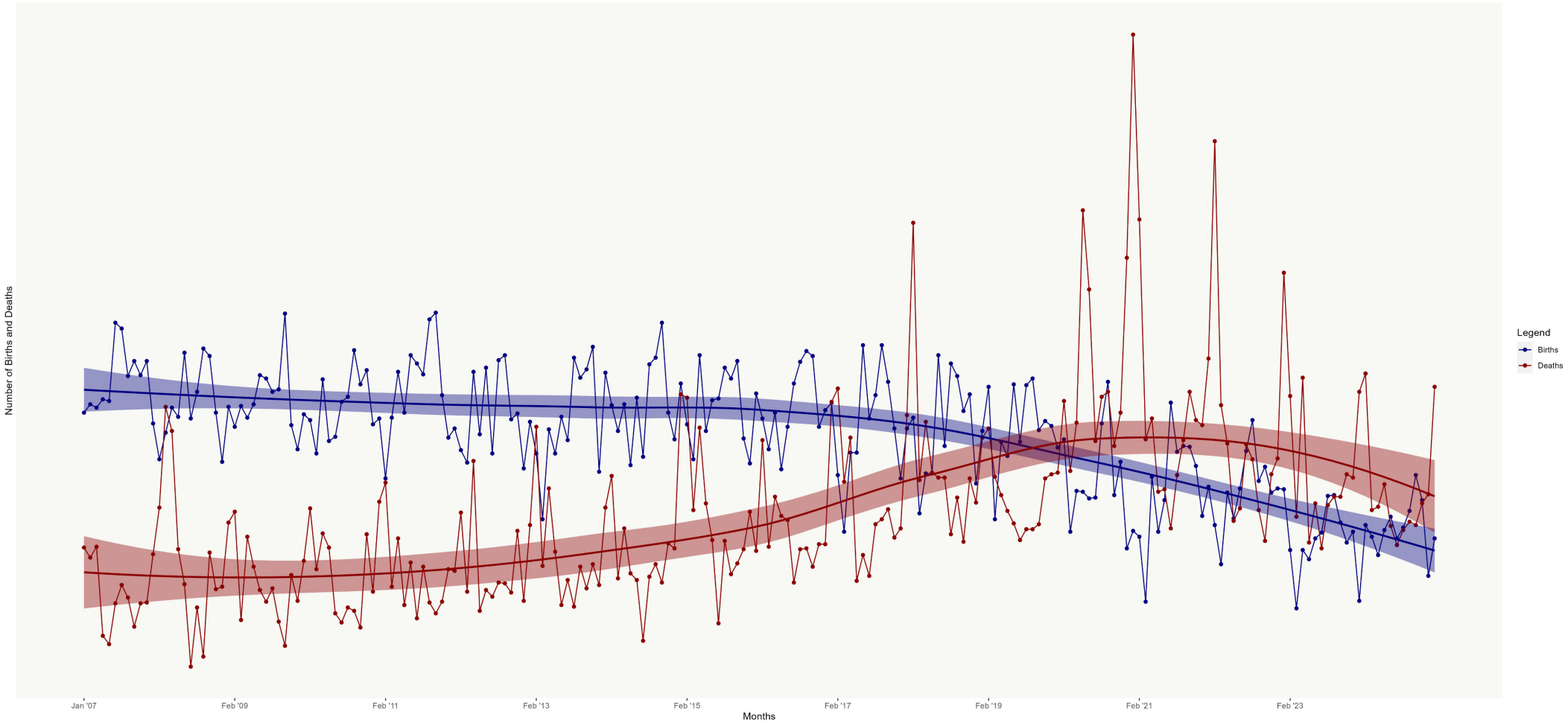
Saint Clair
Monthly Birth and Death Trends (2007–2023)



Legend
Births
Deaths

Saint Louis County Is Entering the First Phase of a Demographic Winter

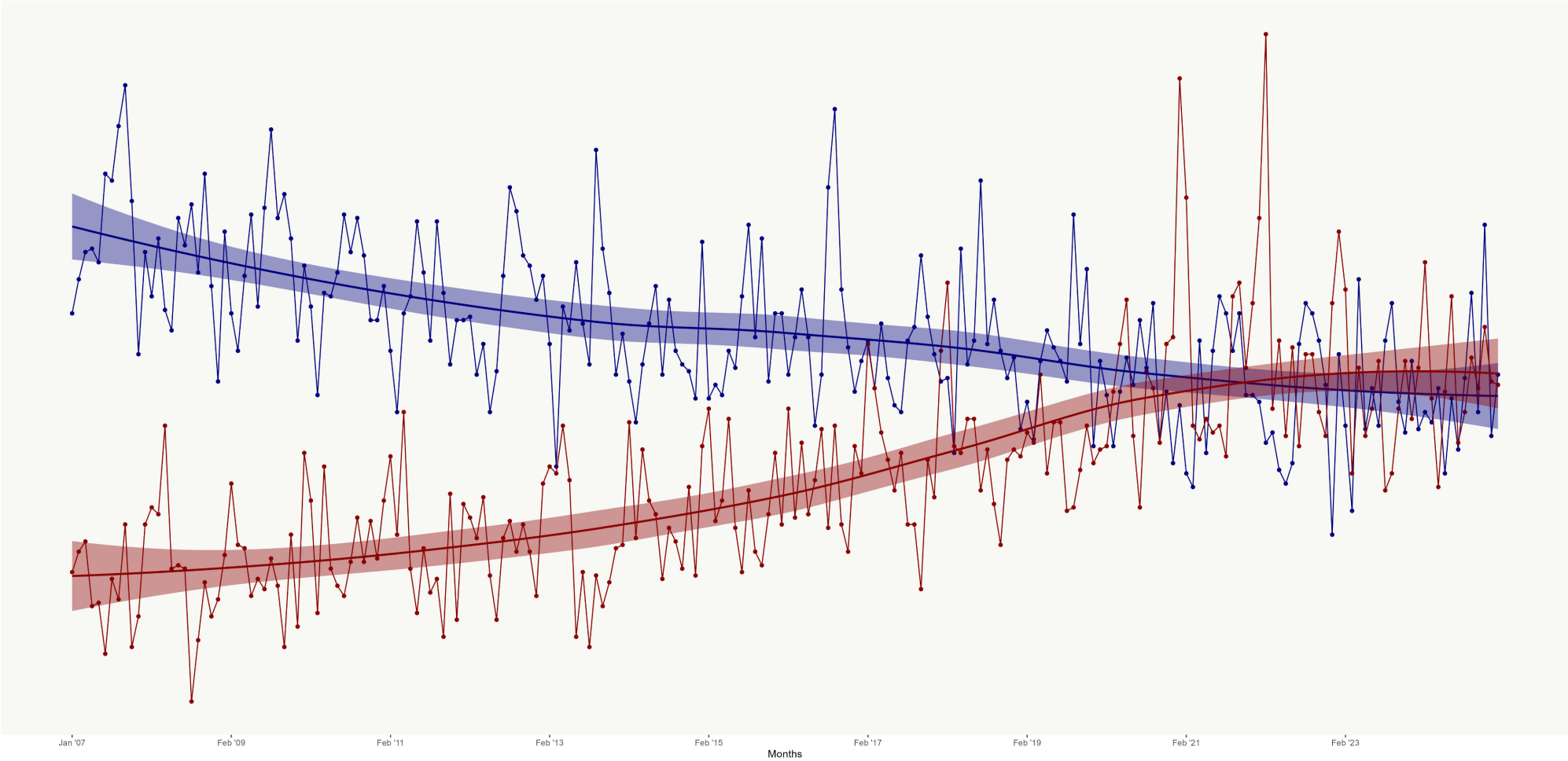
Saint Louis County
Monthly Birth and Death Trends (2007–2024)



Source: Sandoval, J.S. Onelimo, Data is from CDC.

Jefferson County is Entering the First Phase of a Demographic Winter

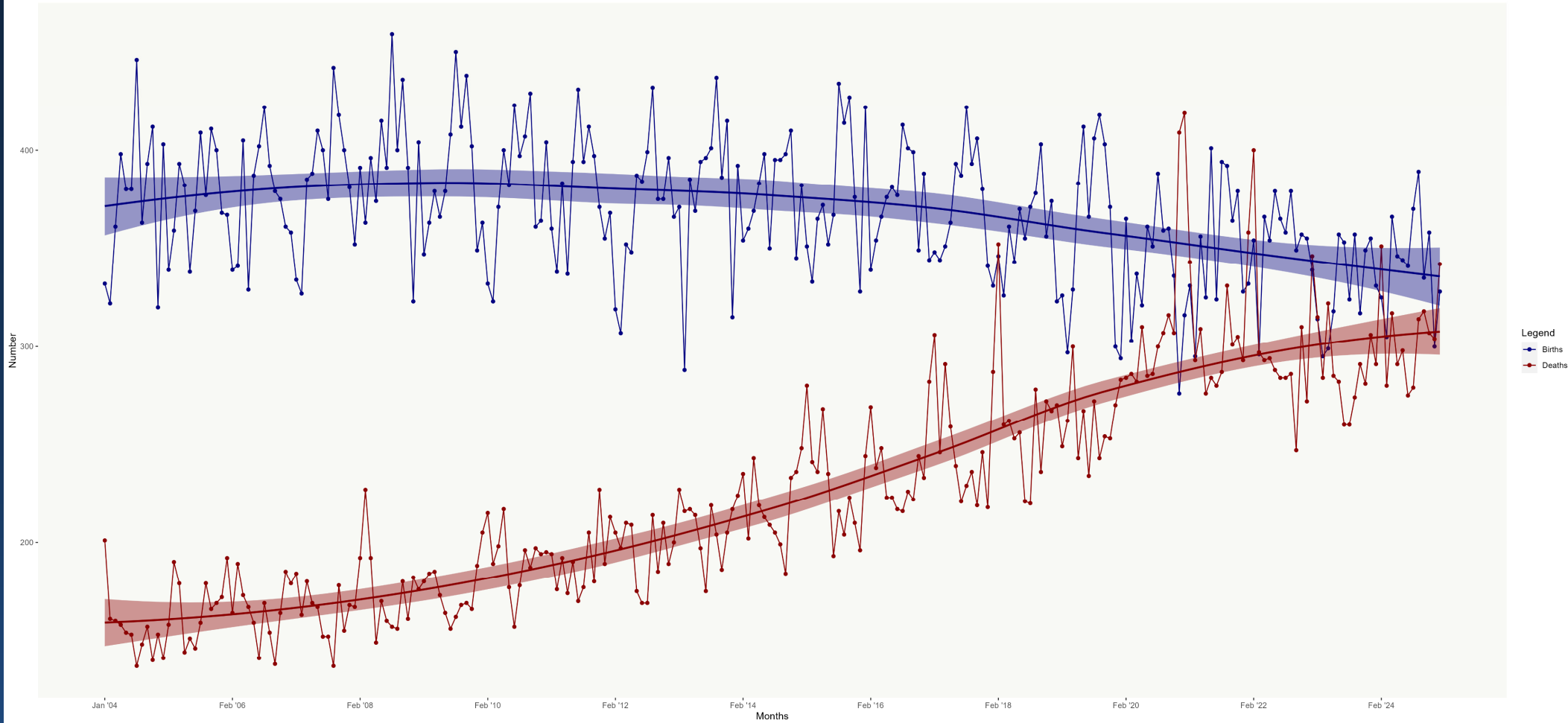
Jefferson County
Monthly Birth and Death Trends (2007–2024)



Source: Sándor, J.S. Onéimo, Saint Louis University. Data is from CDC.

Saint Charles will Enter in the First Phase of a Demographic Winter

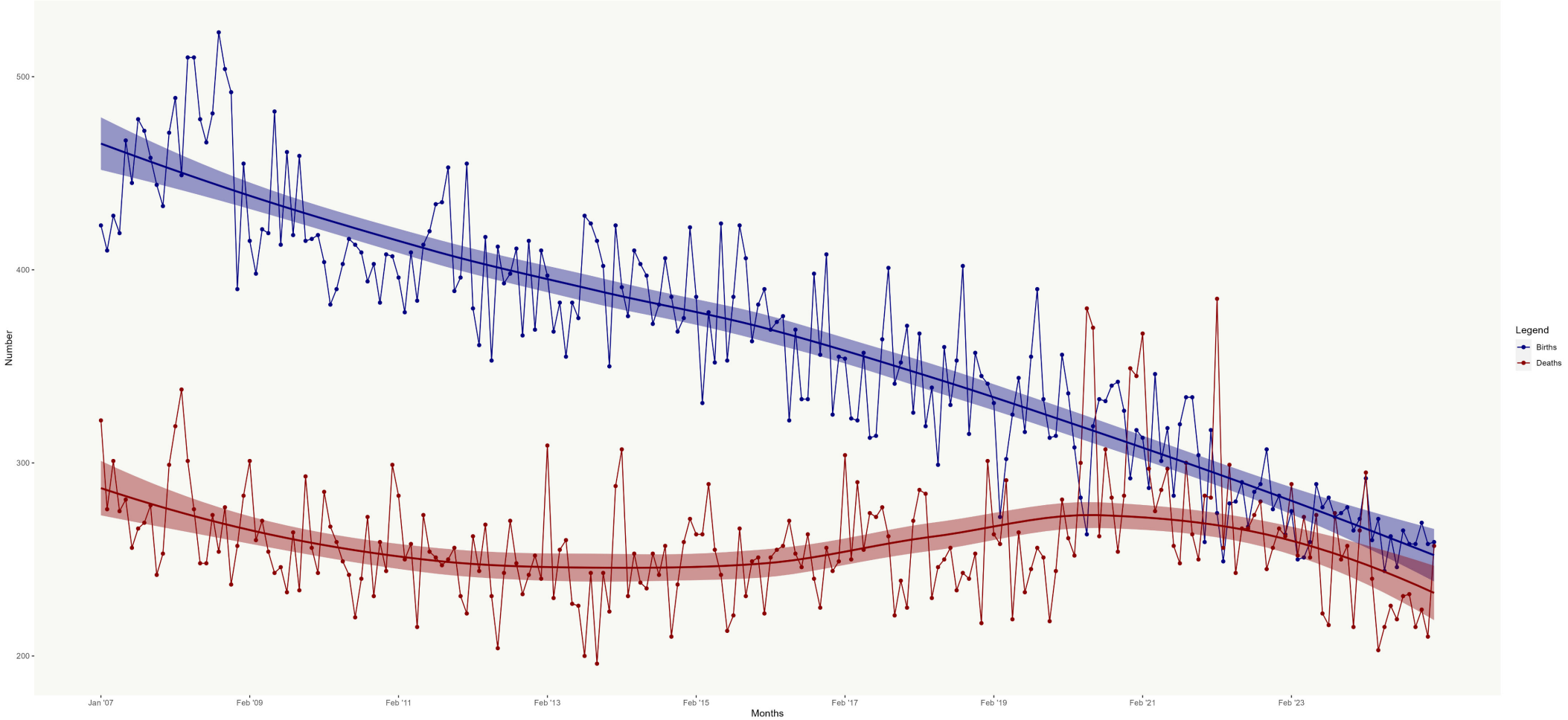
Saint Charles County
Monthly Birth and Death Trends (2004–2024)



Source: Sandoval, J.S. OneAtlas. Data is from CDC.

Saint Louis City is Entering the First Phase of a Demographic Winter

Saint Louis City
Monthly Birth and Death Trends (2007–2024)



Source: Sandoval, J.S. Onesimo, Data is from CDC.

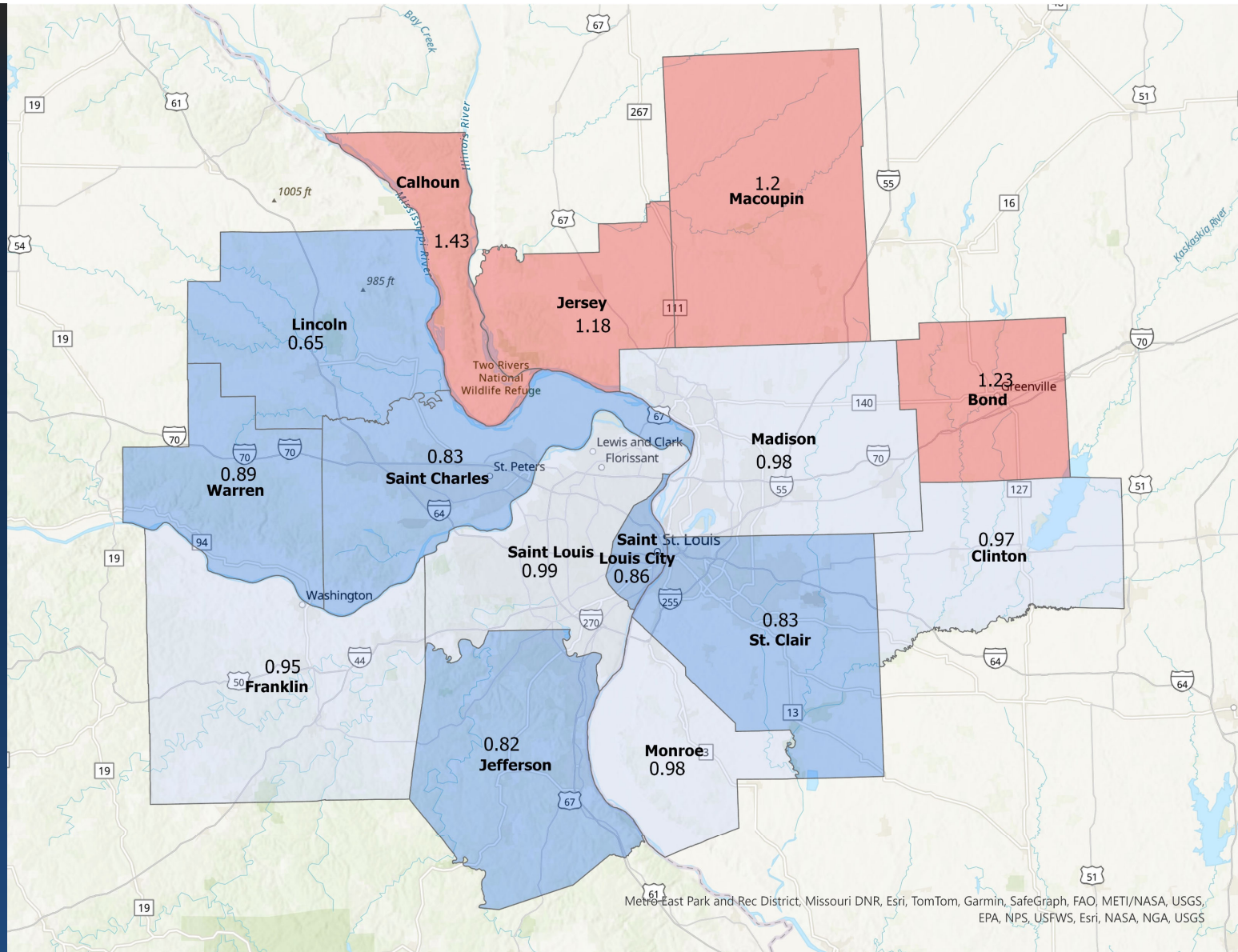
Aging Index for the Largest 50 Metros

The Aging Index is a demographic measure that compares the number of residents aged 65 and older to the number of children under age 15 in a population. It is calculated by dividing the senior population by the child population and multiplying by 100. An Aging Index of 100 indicates a balanced population, with equal numbers of seniors and children. A score above 100 means there are more seniors than children, signaling an aging population. A score below 100 suggests a younger population, with more children than seniors. This index is a powerful tool for understanding long-term demographic trends. A rising Aging Index often points to declining birth rates, increased life expectancy, and a potential strain on the workforce, education system, and tax base. It also has implications for housing, healthcare, transportation, and regional planning. As regions age, the Aging Index helps leaders anticipate and respond to the social and economic challenges that come with shifting age structures.

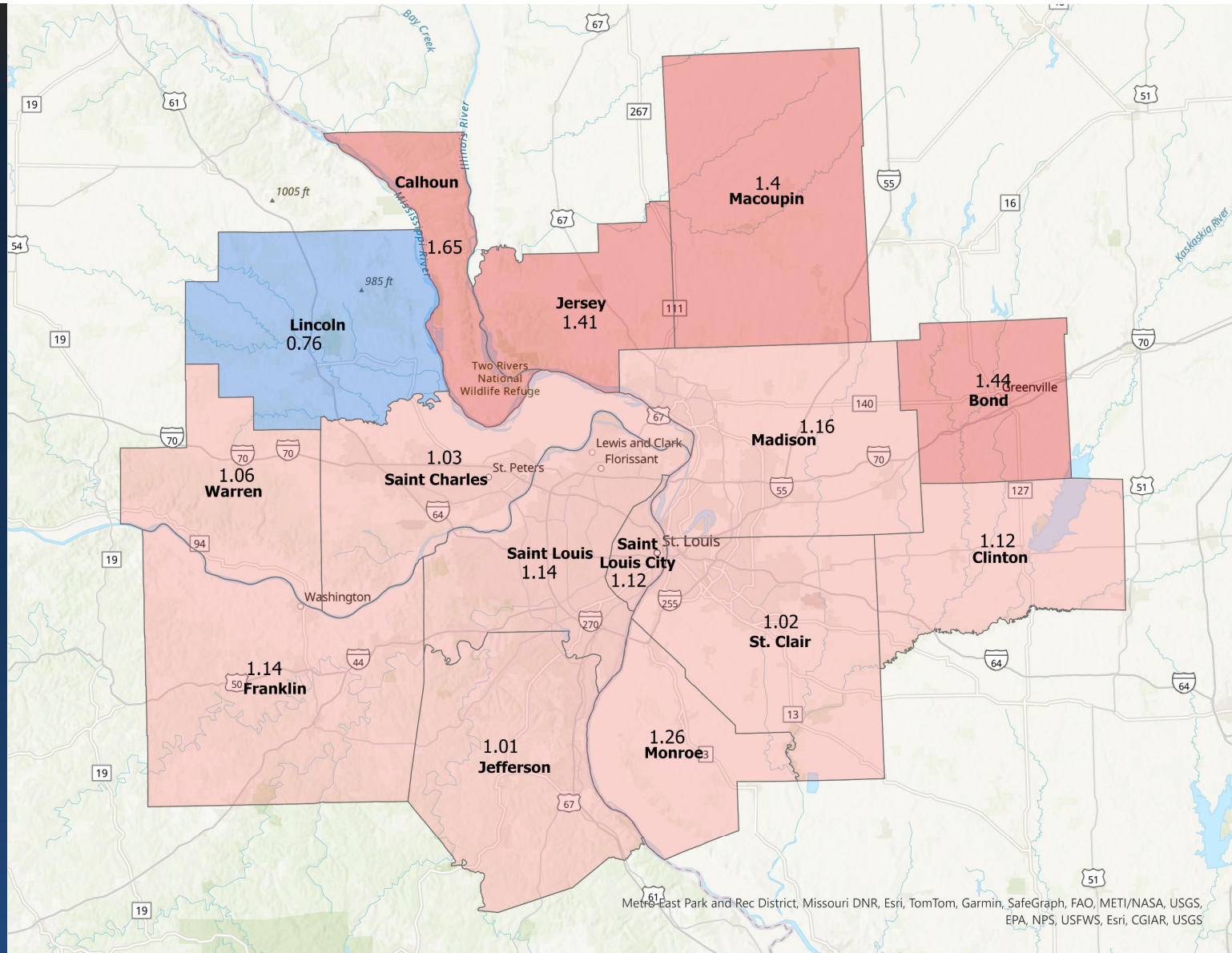
	NAME	Total Population 2024	Aging Index 2020	Aging Index 2024 ▼	Aging Index Change (2020-2024)
1	Pittsburgh, PA	2,429,917	129.1	149.2	20.1
2	Tampa-St. Petersburg-Clearwater, FL	3,424,560	121.3	133.6	12.3
3	Cleveland, OH	2,171,877	108.7	127.0	18.4
4	Hartford-West Hartford-East Hartford, CT	1,169,048	109.0	125.4	16.3
5	Providence-Warwick, RI-MA	1,700,901	106.9	125.0	18.1
6	Miami-Fort Lauderdale-West Palm Beach, FL	6,457,988	109.5	121.9	12.4
7	San Francisco-Oakland-Fremont, CA	4,648,486	96.7	118.4	21.8
8	Boston-Cambridge-Newton, MA-NH	5,025,517	99.2	115.6	16.4
9	St. Louis, MO-IL	2,811,927	91.5	109.8	18.3
10	Portland-Vancouver-Hillsboro, OR-WA	2,537,904	87.5	108.4	20.9

Table: J.S. Onésimo Sandoval, Saint Louis University • Source: U.S. Census, CBSA-EST2024-ALLDATA-CHAR: Annual Metropolitan and Micropolitan Statistical Area Resident Population Estimates by Age, Sex, Race, and Hispanic Origin for the United States: April 1, 2020 to July 1, 2024 • Created with Datawrapper

In 2020, seniors outnumbered youth in four counties.



In 2024, seniors outnumbered youth in 14 out of 15 counties.



**7. DEMOGRAPHIC TRANSITIONS IN SAINT LOUIS
CITY AND METROPOLITAN REGION
School Aged Residents**

LOCAL NEWS

'It's a very tight community': St. Simon parents express shock over sudden school closure decision

"It's hard to say who's running the parish at this point," parent Jim Albenesius said.



<https://www.ksdk.com/article/news/local/st-simon-parents-express-shock-over-sudden-school-closure/63-c83095dc-9480-4dd0-8f50-07a2bee01c89>

St. Louis Post-Dispatch
16,271 followers
6h · 📍


There are only 12 students enrolled in kindergarten through sixth grades for next year, according to an email to families.

St. Michael's Episcopal Day School in Clayton to close
stltoday.com

stltoday · 6m

Jazzmine Nolan-Echols, executive director of Voices since December, said the school board placed her on leave because she refused to participate in the closure process.

St. Louis charter school director sues board after vote to shut down
stltoday.com



Riverview Gardens could lose a school as enrollment falls
Read breaking news for St. Louis, Missouri, serving the St. Louis metropo...
Learn more

St. Louis Post-Dispatch
Yesterday at 9:56 AM

The school district is the first to address post-pandemic enrollment declines throughout the St. Louis region.

https://www.stltoday.com/news/local/education/riverview-gardens-could-lose-a-school-as-enrollment-falls/article_41cb3810-cec2-11ef-a0b6-3712ef902c95.html?fbclid=IwY2xjawHzuL1leHRuA2FibQIxMQABHdVCKyp14JhMhild-90AOIGrJ4RI1rZBVGXIQTrp6tflamMNXpr842cyQ_aem_pnBjy5HJnxBGASoDsUsLgw

EDUCATION

Catholic grade school in north St. Louis County to close after 70 years

Our Lady of Guadalupe School teaches children from pre-kindergarten through eighth grade with one class for each grade level.

<https://www.ksdk.com/article/news/education/our-lady-of-guadalupe-school-close-2024-25-school-year/63-700a5adc-22cd-468a-bab5-d87dc5f11222>

EDUCATION

Updated master plan suggests closing 37 St. Louis Public Schools by 2026 school year

<https://www.ksdk.com/article/news/education/updated-master-plan-suggests-closing-37-st-louis-public-schools-2026-school-year/63-b11d4327-9aa0-4f77-9bc7-fe95c88e1dfa>

Rockwood Board of Education Hears Demographic Study Presentation

According to the study, the student population for Rockwood is projected to increase by 7.65 percent over the next five years and 15 percent over the next 10 years.

With deaths exceeding births in Missouri for the third straight year in 2022, schools can expect more empty desks for the foreseeable future.



https://www.stltoday.com/news/local/education/school-enrollment-drops-in-kirkwood-amid-falling-birth-rates/article_f367fb58-779d-11ee-a12b-9b1439702a90.html#tracking-source=home-top-story

Fewer than 120 students are enrolled for the 2024-2025 school year, the archdiocese said.




St. Monica in Creve Coeur becomes latest Catholic school to close because of low enrollment
From stltoday.com

https://www.stltoday.com/news/local/education/st-monica-in-creve-coeur-becomes-latest-catholic-school-to-close-because-of-low-enrollment/article_808ac10e-fe90-11ee-b516-fb4737dafbf6.html?utm_medium=social&utm_source=twitter_stltoday

Six questions surrounding Fontbonne University's closure

St. Louis Public Radio | By Sarah Fester
Published March 20, 2024 at 9:00 AM CDT

LISTEN · 4:07



<https://www.stlpr.org/education/2024-03-20/six-questions-surrounding-fontbonne-universitys-closure>

OUR REGION'S FUTURE

DEPENDS ON CHANGE: WITH

STRONG DOMESTIC IN-

MIGRATION.

IF THE NEXT 50 YEARS MIRROR

THE LAST, OUR REGION WILL

FACE A FUTURE WITH FAR

FEWER CHILDREN.

Children Ages 0–14 in the 15-County St. Louis Metropolitan Area

Assuming the region cannot solve its domestic in-migration challenge (i.e., no net positive domestic migration): If births remains stable at 27,322 births per year through 2045, the 15-county St. Louis MSA will have approximately 395,000 children under age 15 in 2045.

Year ▲	Children Under 15	Percent of Population Under 15
1930	386,775	24.8%
1940	351,121	21.4%
1950	452,258	23.9%
1960	698,401	31.1%
1970	744,043	29.5%
1980	569,311	22.9%
1990	569,506	22.2%
2000	580,385	21.7%
2010	544,541	19.5%
2020	518,864	18.4%
2024	487,985	17.4%
2045 - (Average 23,425 births) Trend	359,278	
2045 - (Average 26,511 births)	395,561	

Table: J.S. Onésimo Sandoval, Saint Louis University • Source: U.S. Census Bureau • Created with Datawrapper

Saint Louis Metropolitan Region Potential Graduates

■ Graduates ■ Demographic Transitions

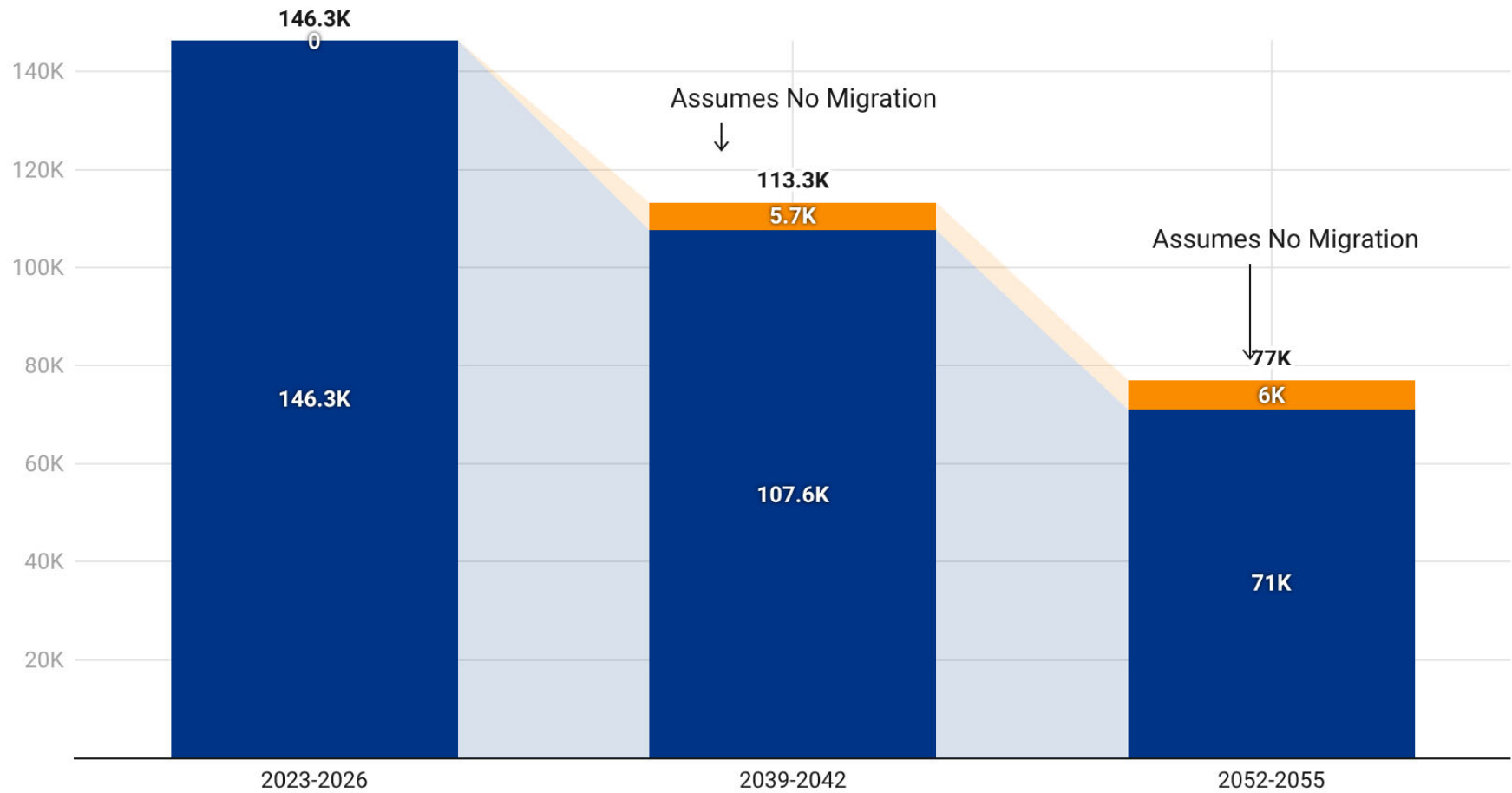


Chart: J.S. Onésimo Sandoval, Saint Louis University • Source: U.S. Census One Year ACS Data 2023 and Population Estimates. • Created with Datawrapper

8. SUMMARY



Facing the Future

- **Bending the Curves: Attracting Young Adults and Families**
 - The long-term demographic trajectory of the region depends on attracting and retaining younger adults and families with children.
- **Saint Louis MSA: Demographic Hurdles**
 - Natural population decline: deaths now exceed births.
 - Net domestic outmigration: more people leaving than moving in.
 - International migration is partially offsetting these losses, but not fully reversing the trend.
- **Fewer Children**
 - The magnitude of this decline is the central question.
- **Demographic Stress Test: Looking toward the 2030 Census and beyond:**
 - The MSA is projected to face pressure to remain among the 25 largest metros in the U.S.
 - Under low domestic migration scenarios, the region could fall outside the top 30 metros by 2075.
 - Missouri's largest metro status becomes increasingly uncertain by mid-to-late century.
- **Managing Population Decline**
 - The central challenge is not growth, but stabilization under persistent demographic challenges.

Source of the Image: Justin Barr

STLFromAbove

D4D

Demography 4 Democracy

Key Insights & Updates

- Shrinking City Population
- 2024 Census Update
- Population Change Map
- Births continue to drop
- Families with Children

In the Spotlight:

Saint Louis City is ranked #2 in the U.S. for the Highest Percentage Loss of African American Residents.

[Click here to read the African American Res. Change for the Top 10 Cities.](#)

The Shrinking Adult Population of Saint Louis City

Over the past month, I have received more than a dozen requests by citizens, business leaders, and media outlets seeking the most up-to-date demographic trends for Saint Louis City and the Saint Louis MSA. Given the growing interest in this demographic data, and in an effort to provide a consistent and comprehensive response to each request, I felt it was important to share my insights more formally. As a result, I decided to write an opinion piece for the *Mount City Messenger*, where I could offer a brief analysis of the current demographic shifts and their implications for Saint Louis City. This opinion piece aims to provide some clarity on these trends and their potential impact on the medium to long demographic trends for the city. Today the census released the **2024 population estimates** that showed that Saint Louis City lost population. The new estimates for the city is 279,695 decline of 3,077 residents.

Top Ten Cities with the Highest Percentage of African American/Black Population Loss (2018-2023)

Note: The ACS data includes all selected U.S. cities with a publicly reported data for the 10-year period.

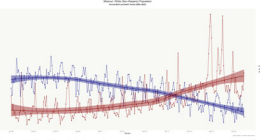
City	Black Population 2018	Black Population 2023	Change 2018-2023	Percent Change
1 Boston city, Massachusetts	152,713	121,113	-32,600	-21.35%
2 St. Louis city, Missouri	107,987	104,491	-3,496	-3.24%
3 San Diego city, California	93,382	76,689	-16,693	-17.88%
4 Norfolk city, Virginia	97,382	80,669	-16,713	-17.16%
5 New Orleans city, Louisiana	226,789	193,715	-33,074	-14.58%
6 Tampa city, Florida	86,887	76,761	-10,126	-11.65%
7 Oakland city, California	91,622	84,346	-7,276	-7.94%
8 Richmond city, Virginia	105,654	91,270	-14,384	-13.62%
9 Montgomery city, District of Columbia	211,654	202,706	-8,948	-4.23%
10 Minneapolis city, Minnesota	81,833	75,174	-6,659	-8.14%

Thank you!! Questions? Ness Sandoval

ness.sandoval@slu.edu

Final Remarks: Confronting the Challenges of a Demographic Winter

In 2014, I began comparing birth and death data for White (Non-Hispanic) residents in Missouri, alongside data for other racial and ethnic groups. Over the years, it has become increasingly evident that the demographic trends, especially within the White (Non-Hispanic) population, pose significant challenges for the state. With the projected mortality rates of the Baby Boomer generation, the aging population will continue to intensify this demographic shift, leading to a growing population deficit. This widening gap in population growth suggests that reversing this trend will become progressively more difficult. These evolving dynamics have far-reaching implications not only for Missouri but, for the Saint Louis MSA. These trends within the White (Non-Hispanic) population are mirrored in counties like Saint Charles, Saint Louis, and Jefferson. However, Saint Louis City stands out as a geographic area where more babies were born to White mothers than there were White deaths. The city presents a different demographic challenge more black residents are dying than are born.



Today's Census population estimates reveal a significant milestone: the region can finally report a two-period trend in population growth. However, this growth is entirely driven by international migration. Without immigration, the region would have faced yet another year of population decline. This underscores a fundamental reality—our shared future depends on the contributions of those who choose to make this region their home. Within a decade, it is projected that 100% of U.S. population growth will come from international migration. Saint Louis has the opportunity to lead by example, demonstrating that a thriving society is built on the dignity and worth of every person. Sustaining the common good requires a commitment to welcoming, integrating, and valuing new residents. These estimates show that diverse population growth is not just an economic necessity; it is a moral and social imperative—a force that strengthens communities, enriches cultures, and ensures that opportunity and prosperity are shared by all. The residents of the region are committed to working together to build a stronger and united One Saint Louis.

DEMOGRAPHY 4 DEMOCRACY
EMPOWERING TOMORROW'S DREAMERS WITH
KNOWLEDGE TODAY



DEMOGRAPHY 4 DEMOCRACY
EMPOWERING TOMORROW'S DREAMERS WITH
KNOWLEDGE TODAY

